

Banque de données herpétologiques

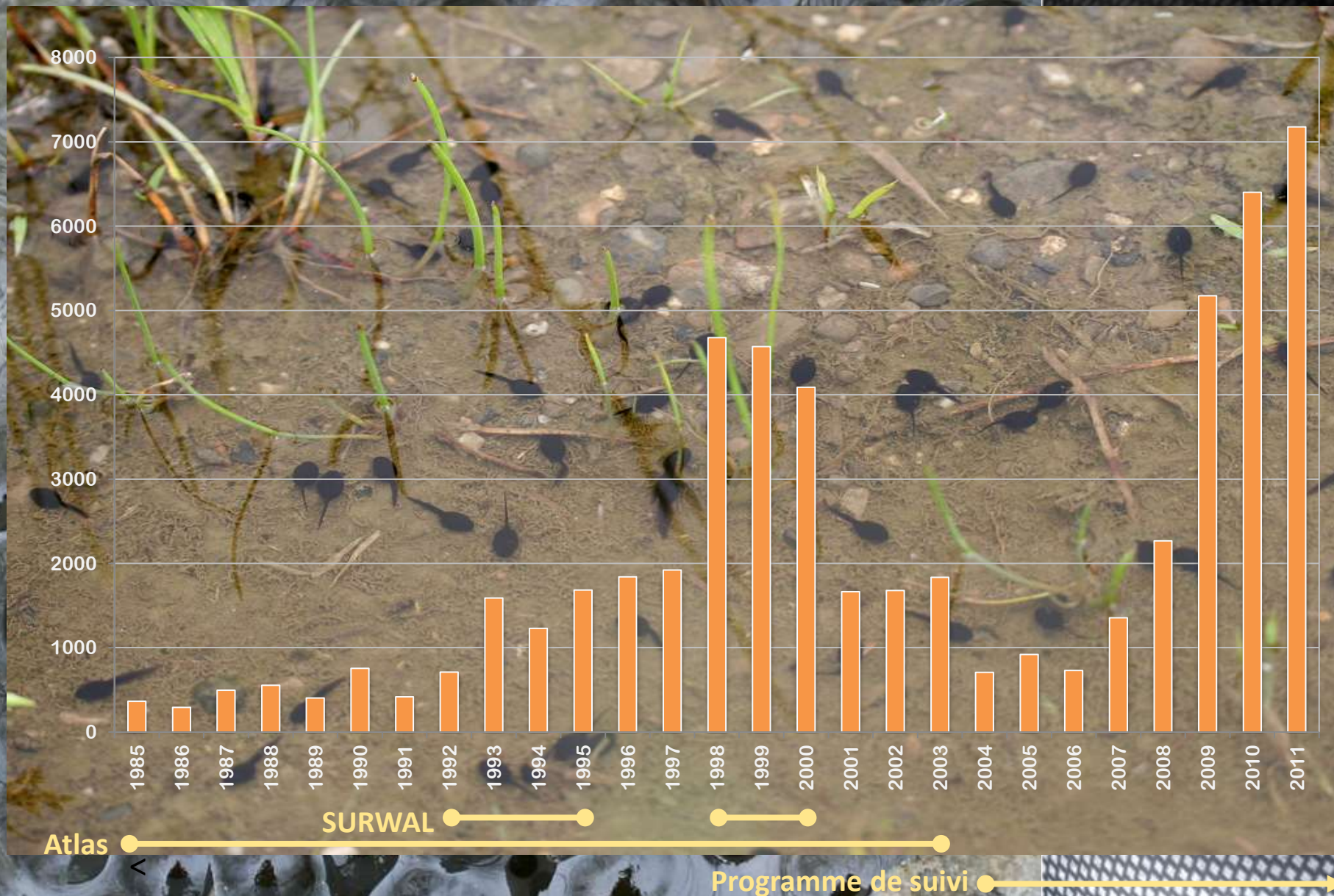
**Amphibiens de Wallonie: Bilan des connaissances
et évolution récente**

Journée des observateurs Raîenne

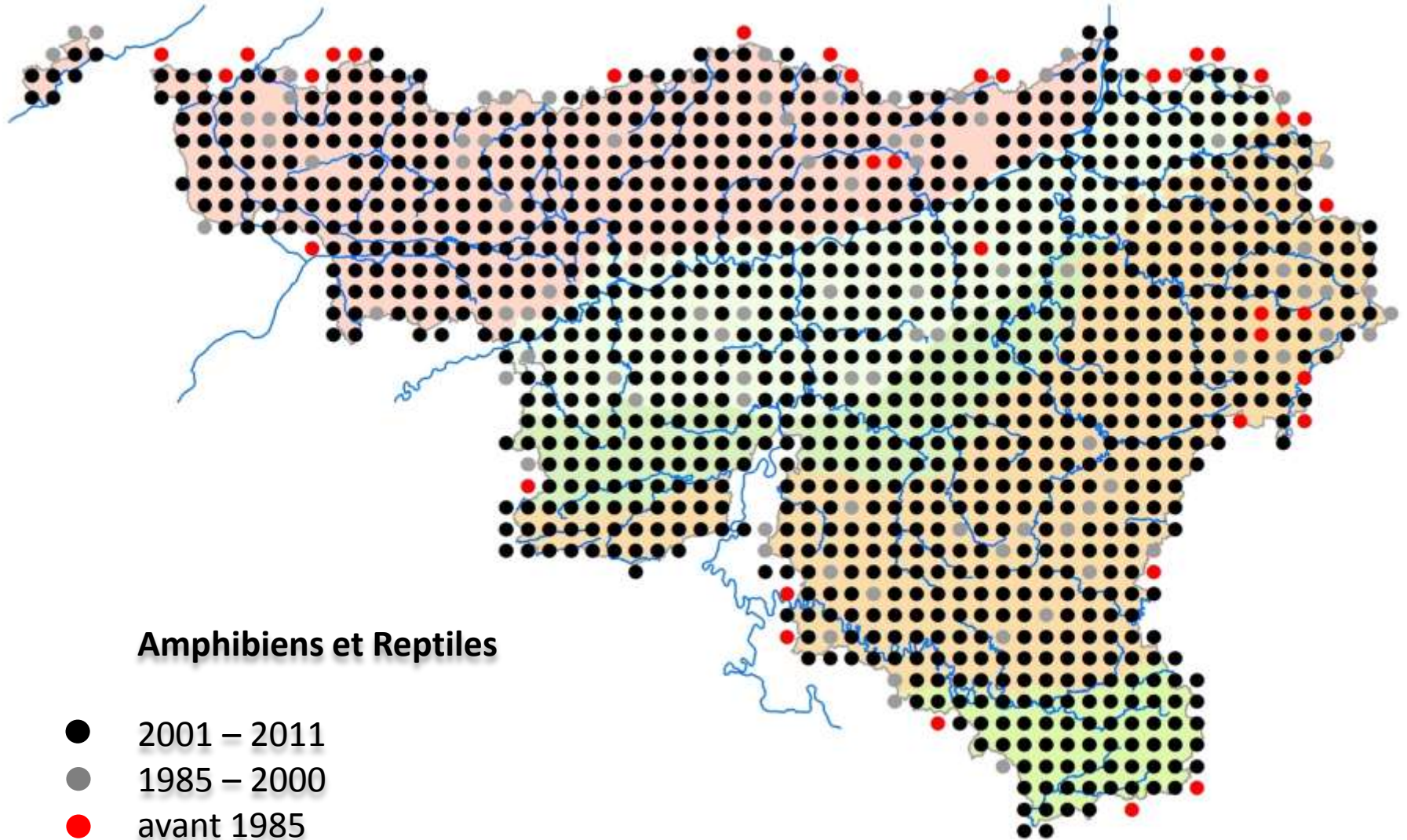
29 janvier 2012 - Namur



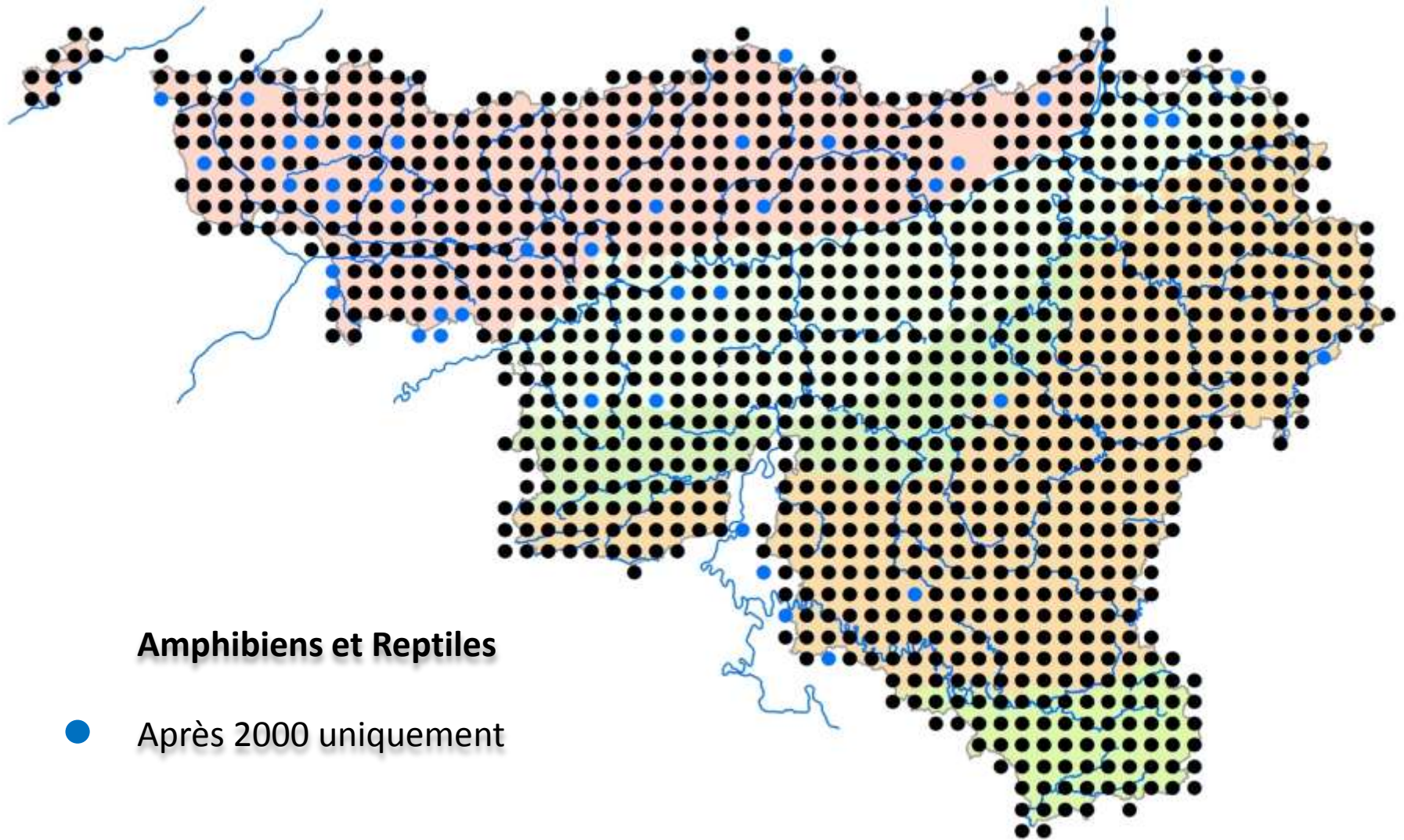
Banque de données herpétologique



Banque de données herpétologique



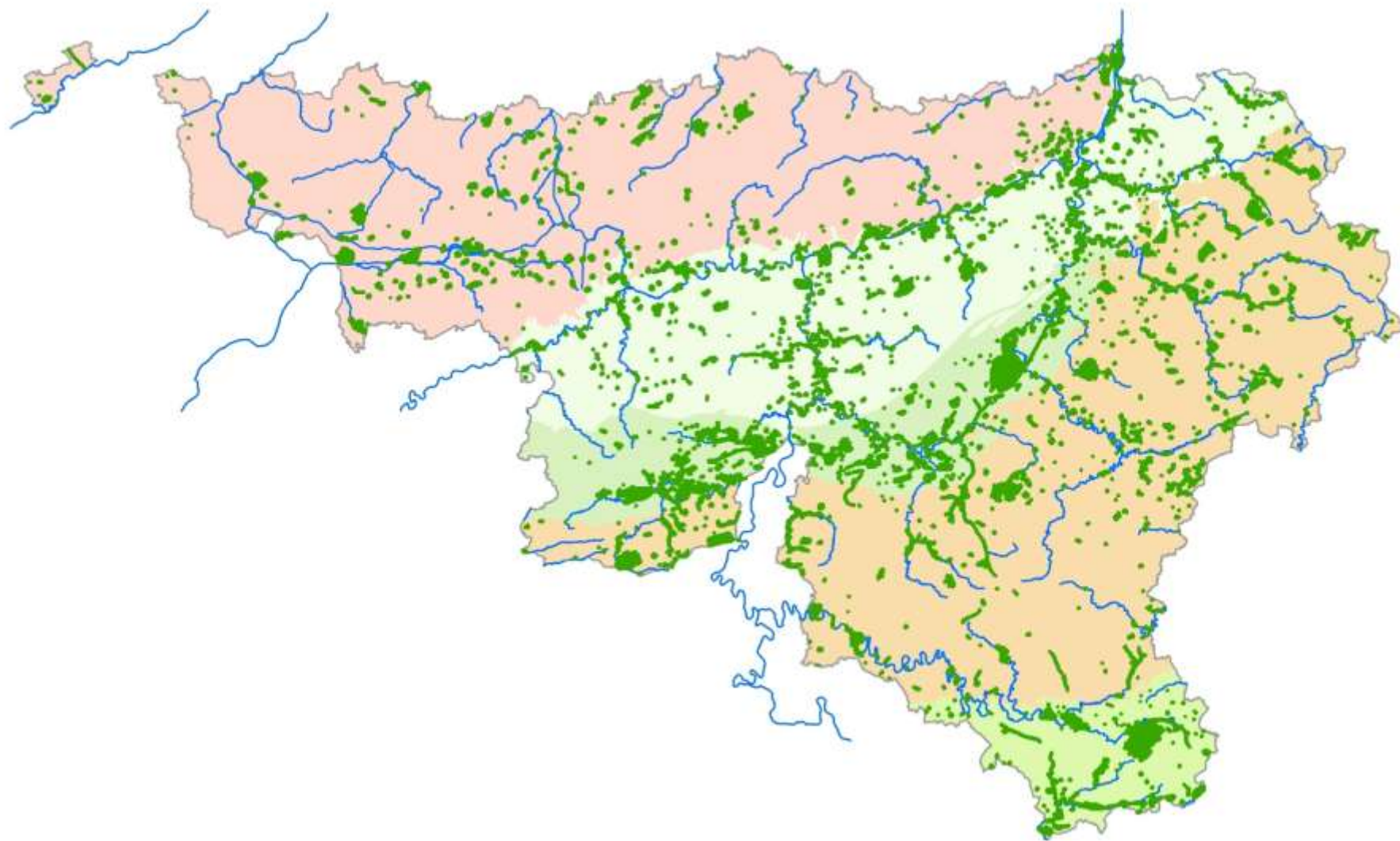
Banque de données herpétologique



Les Sites de Grand Intérêt Herpétologique

- Sites abritant des espèces (semi-) rares
- Triton crêté, Alyte accoucheur, Sonneur à ventre jaune, Crapaud calamite, Lézard des souches, Lézard des murailles, Couleuvre à collier, Coronelle lisse et Vipère péliade
- > 1.900 identifiés

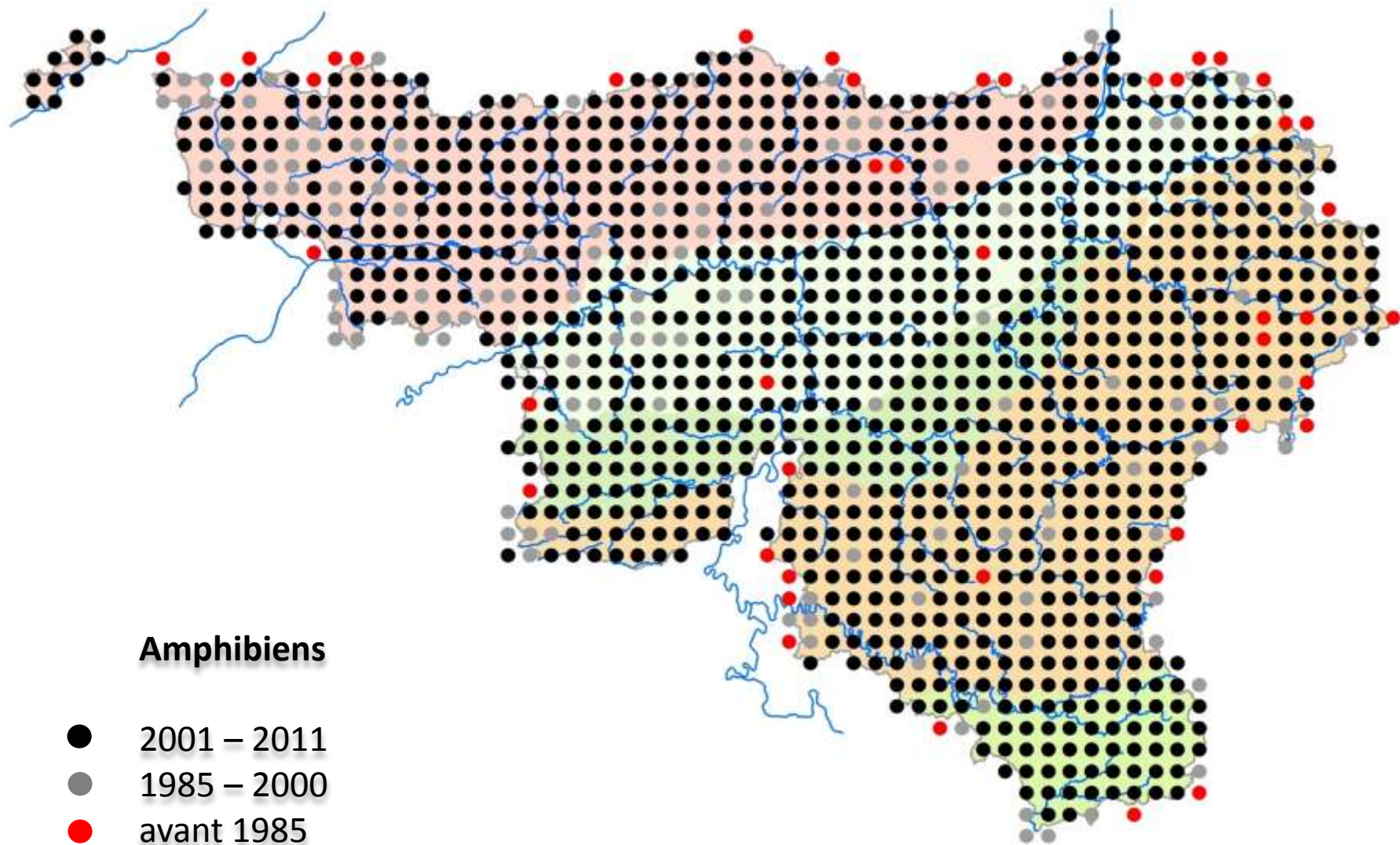
Les Sites de Grand Intérêt Herpétologique



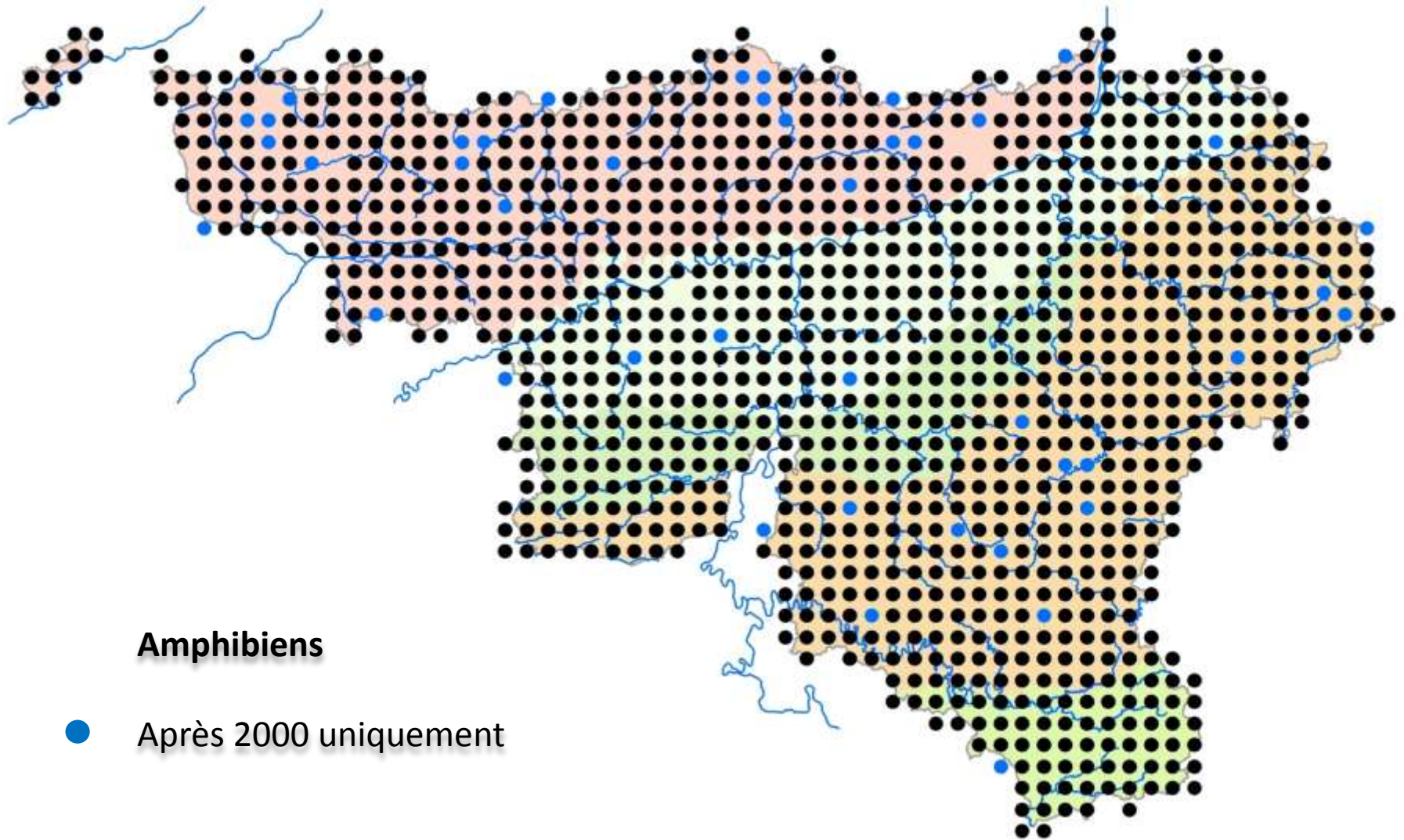
Banque de données: Amphibiens



Banque de données: Amphibiens

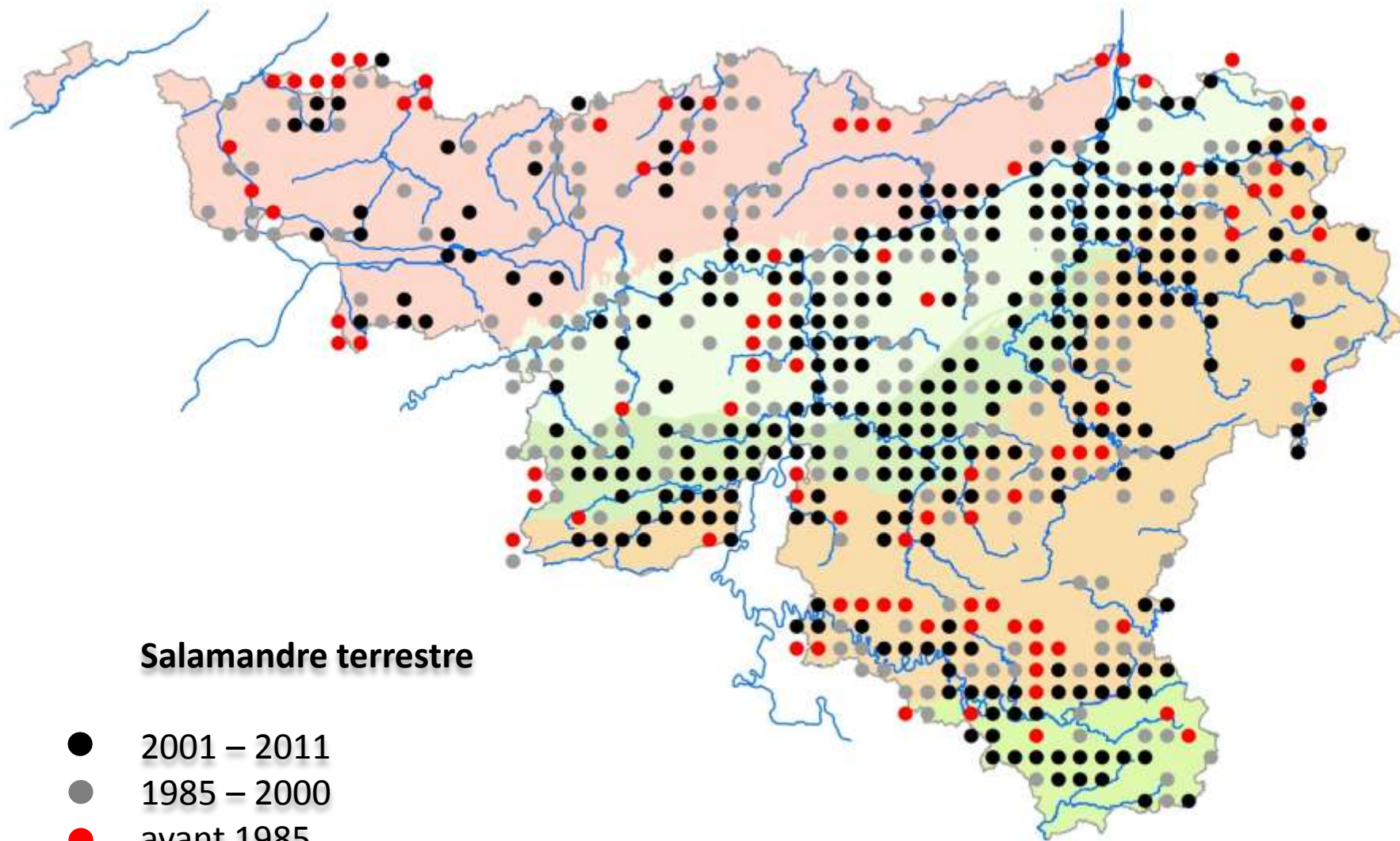


Banque de données: Amphibiens



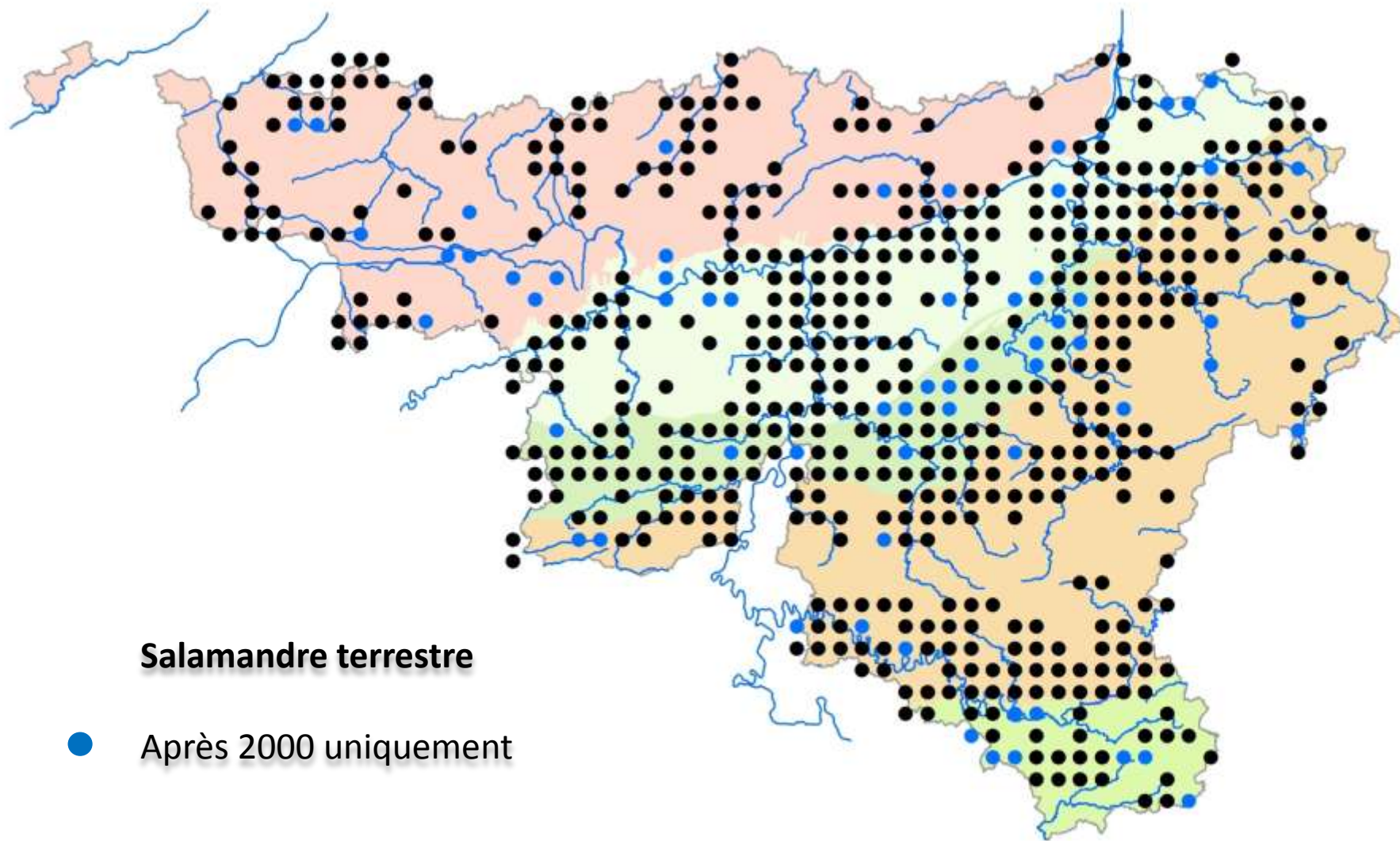
Salamandre terrestre





Salamandre terrestre

- 2001 – 2011
- 1985 – 2000
- avant 1985

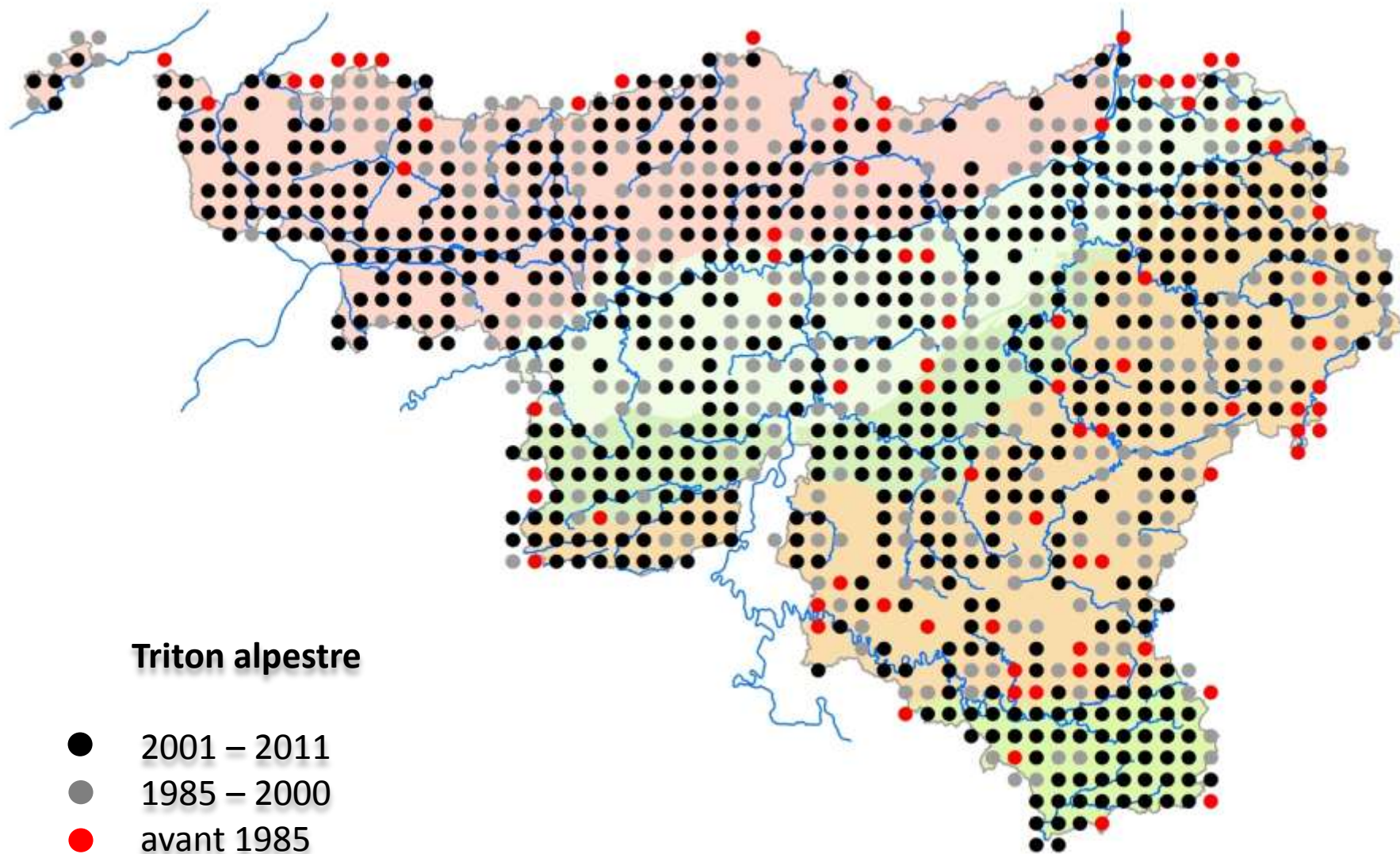


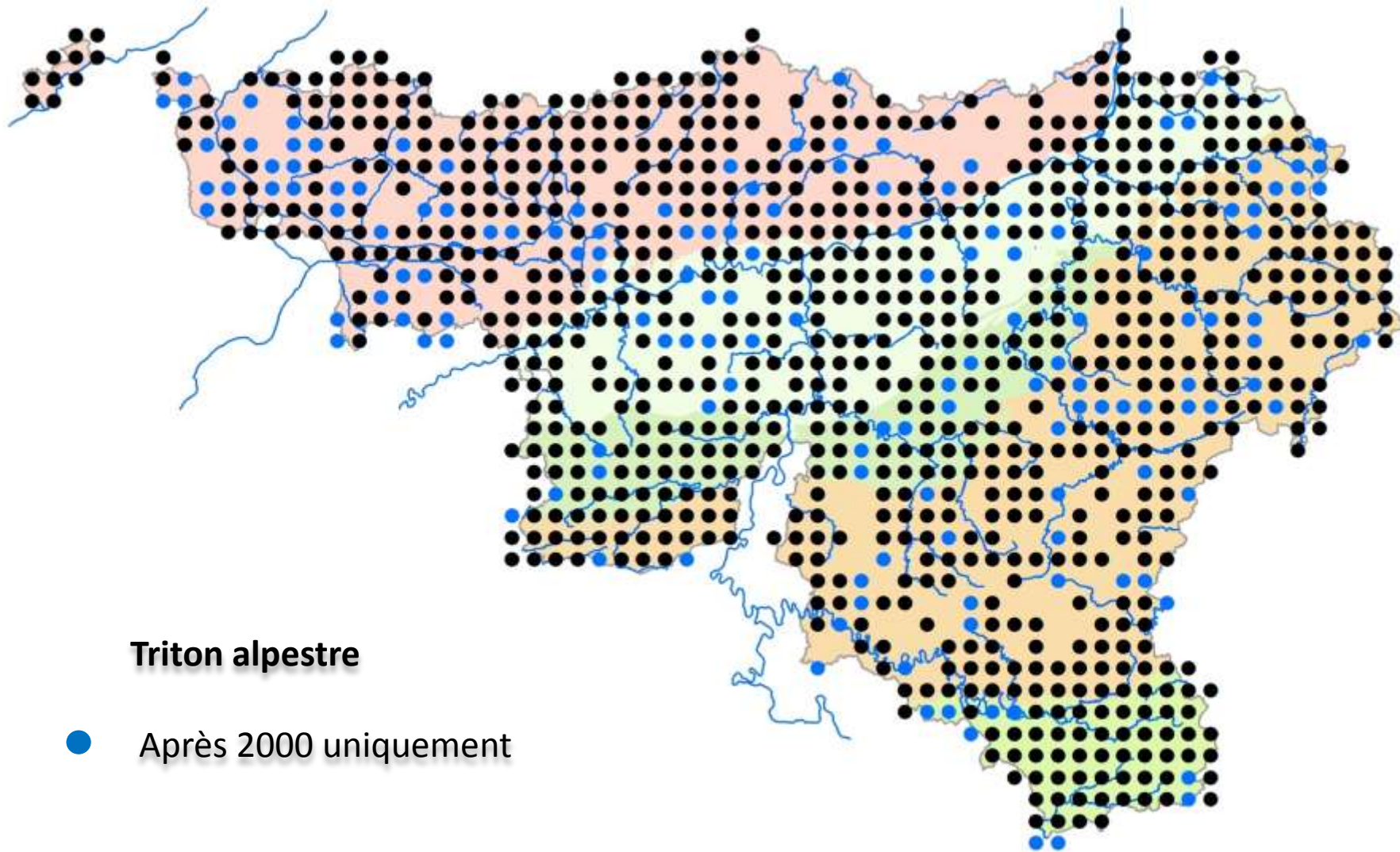
Salamandre terrestre

● Après 2000 uniquement

Triton alpestre





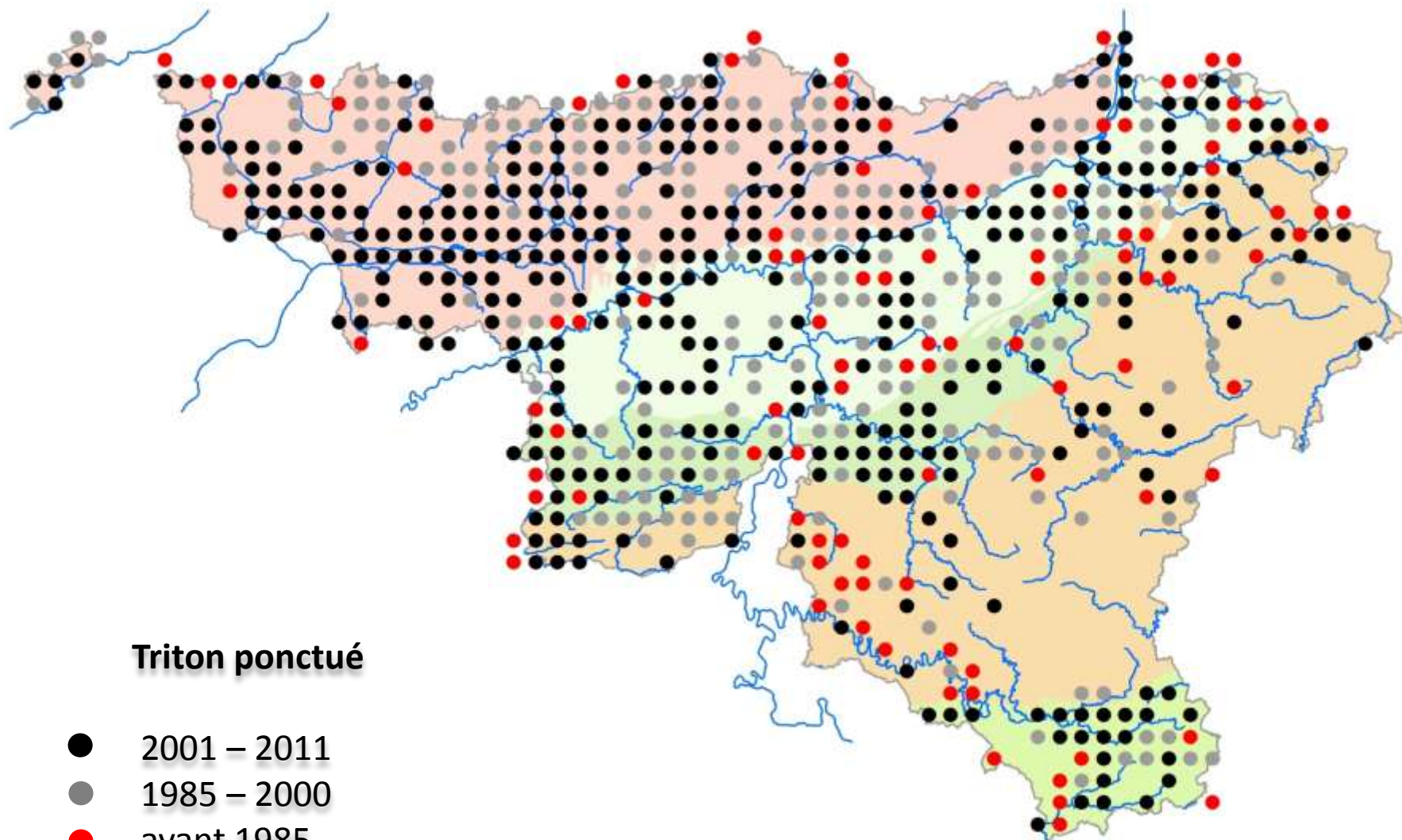


Triton alpestre

● Après 2000 uniquement

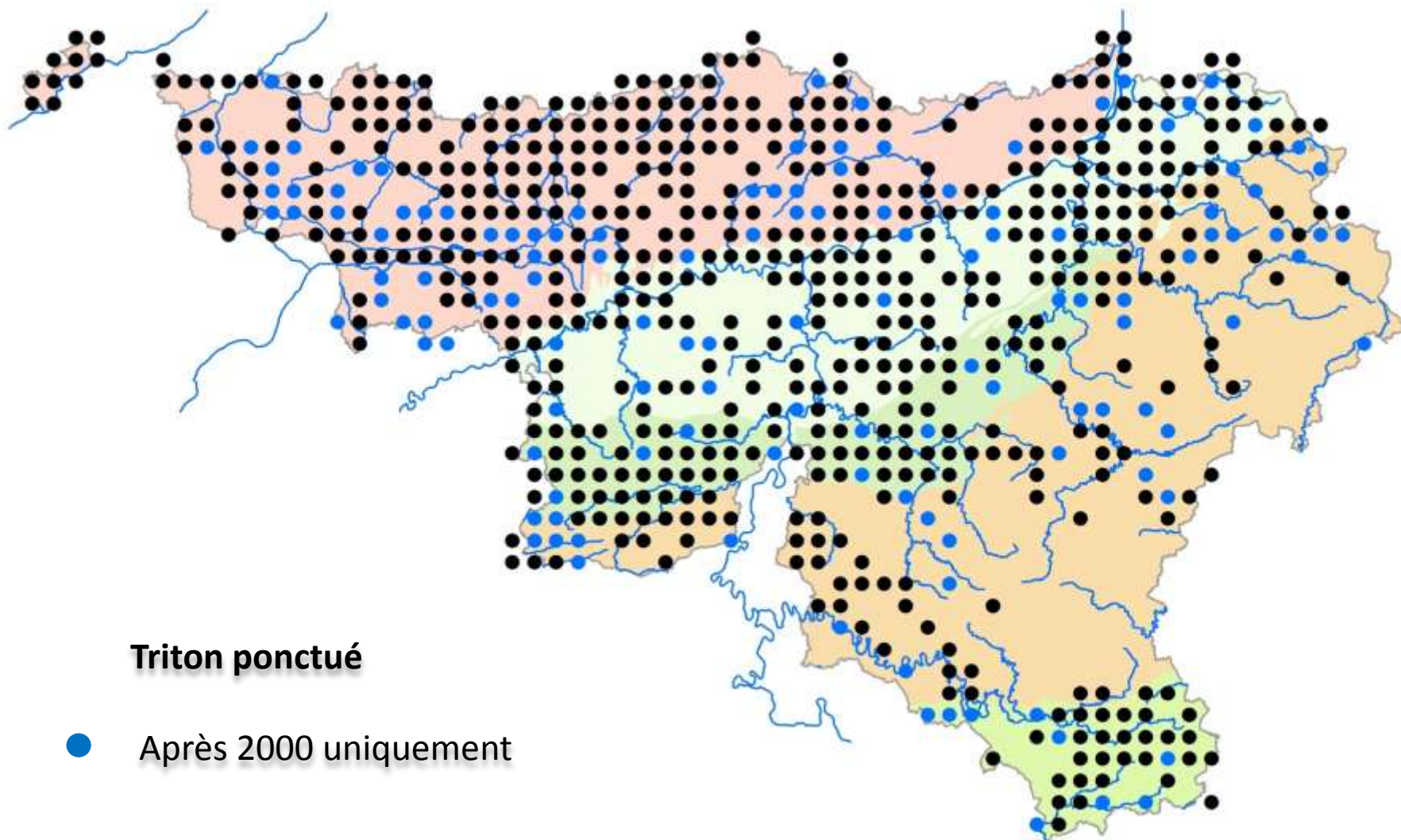
Triton ponctué





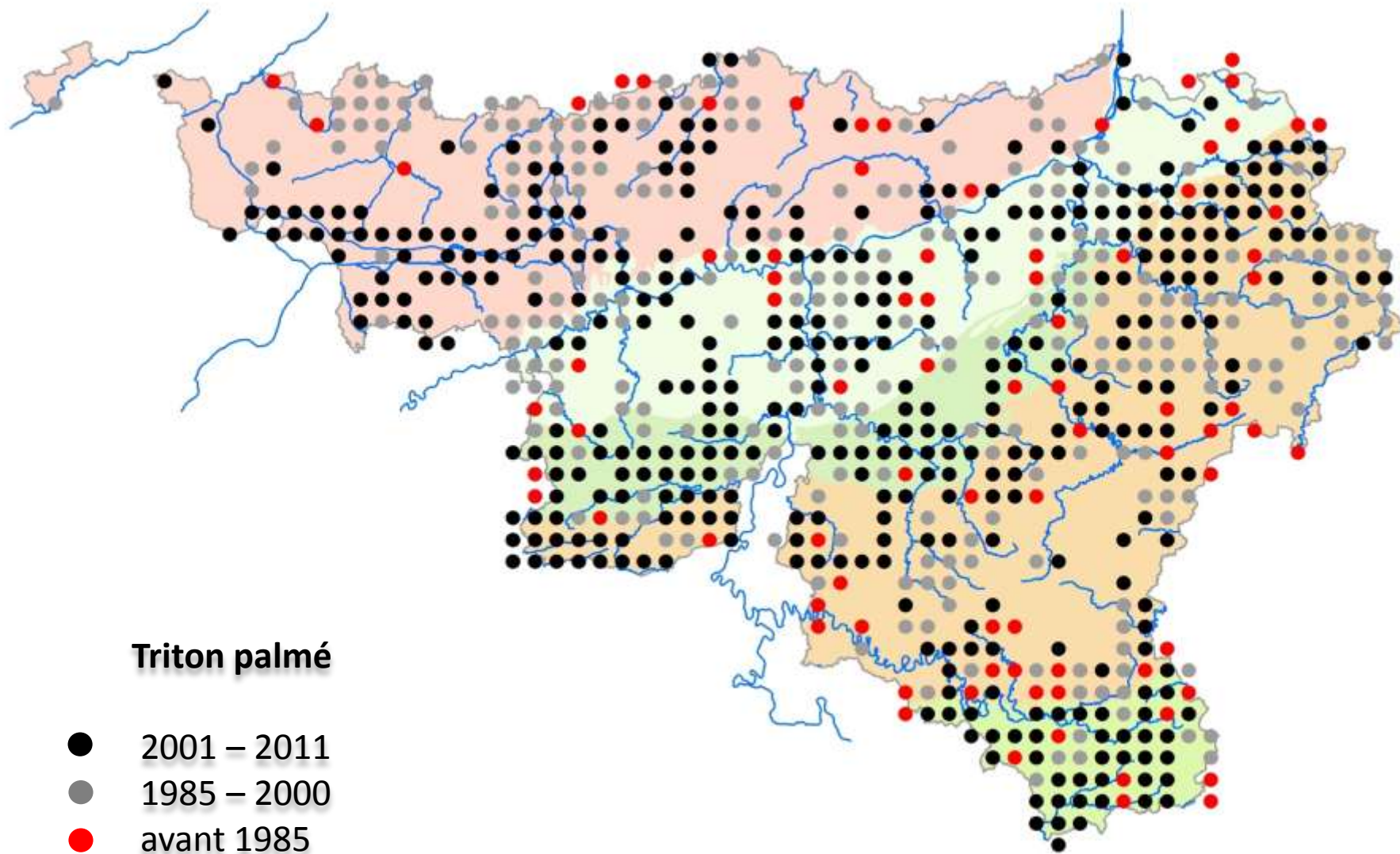
Triton ponctué

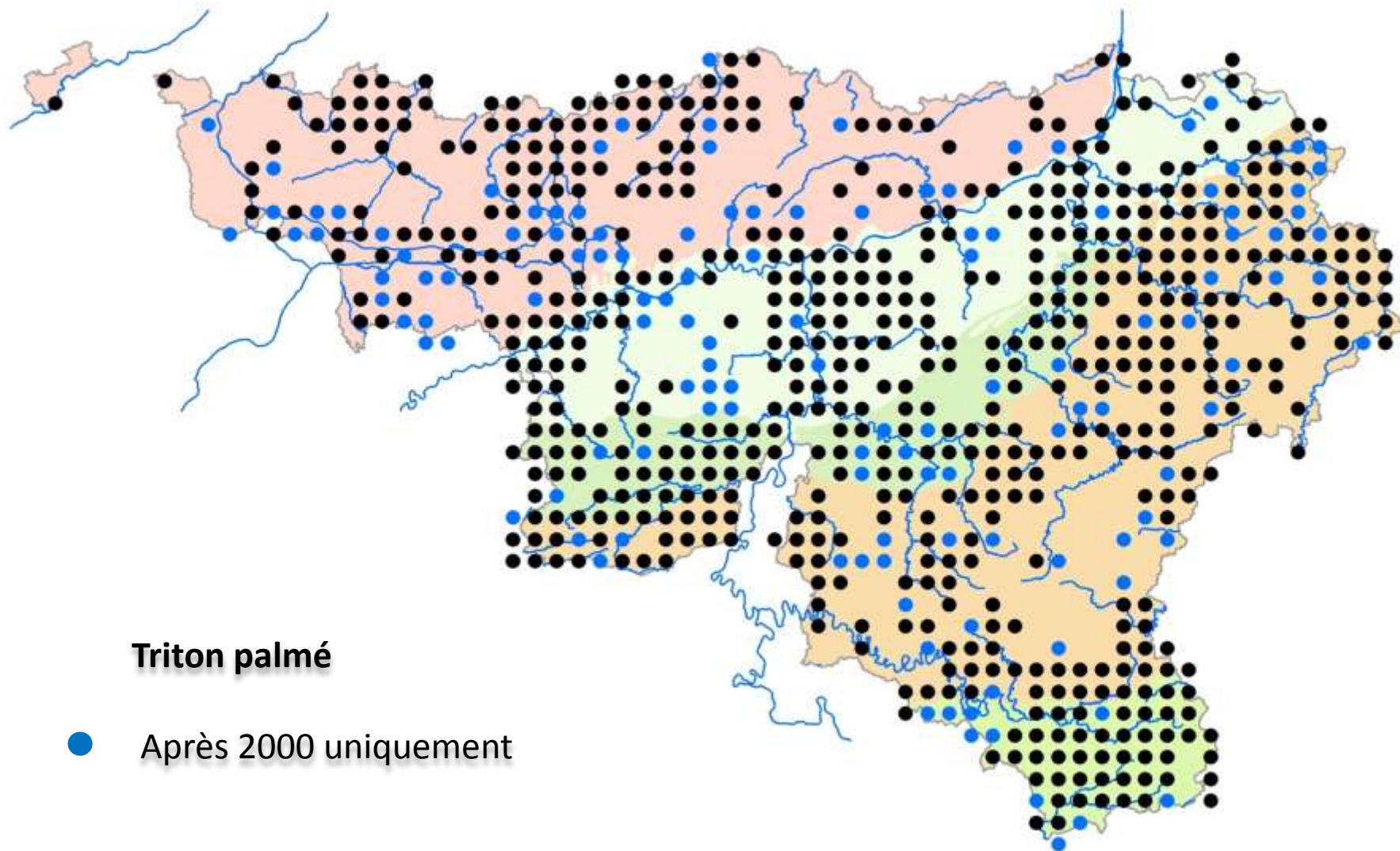
- 2001 – 2011
- 1985 – 2000
- avant 1985





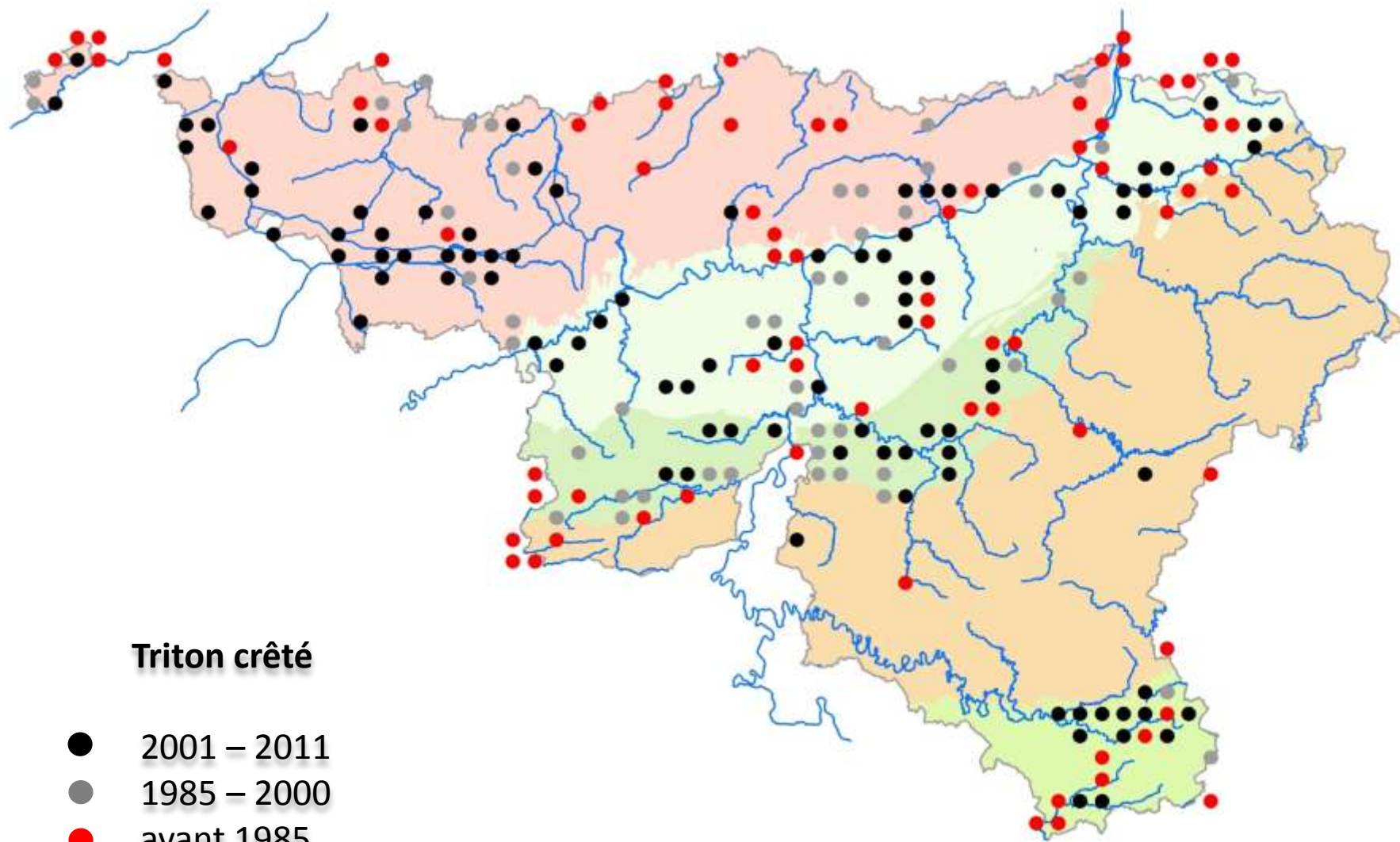
Triton palmé





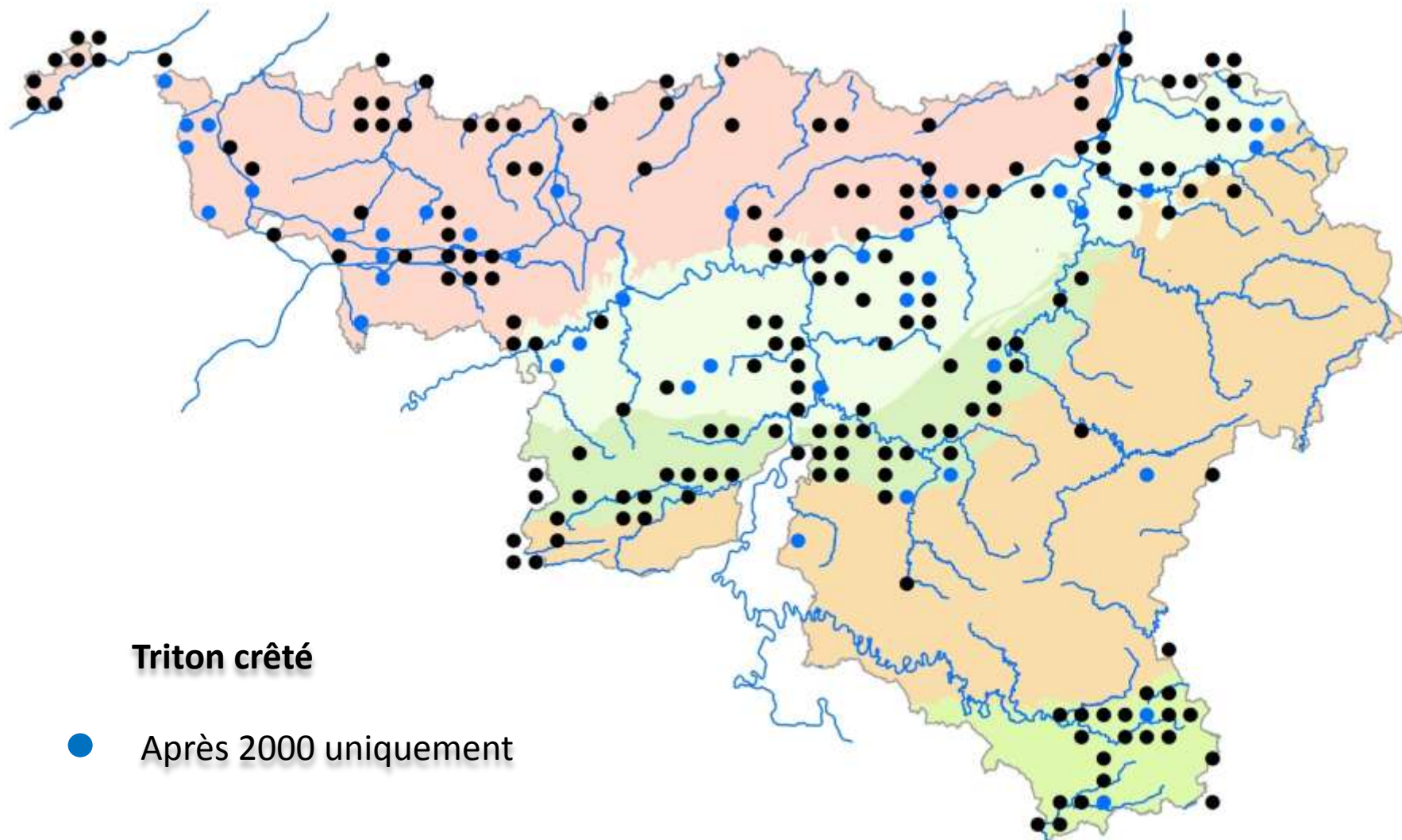
Triton crêté





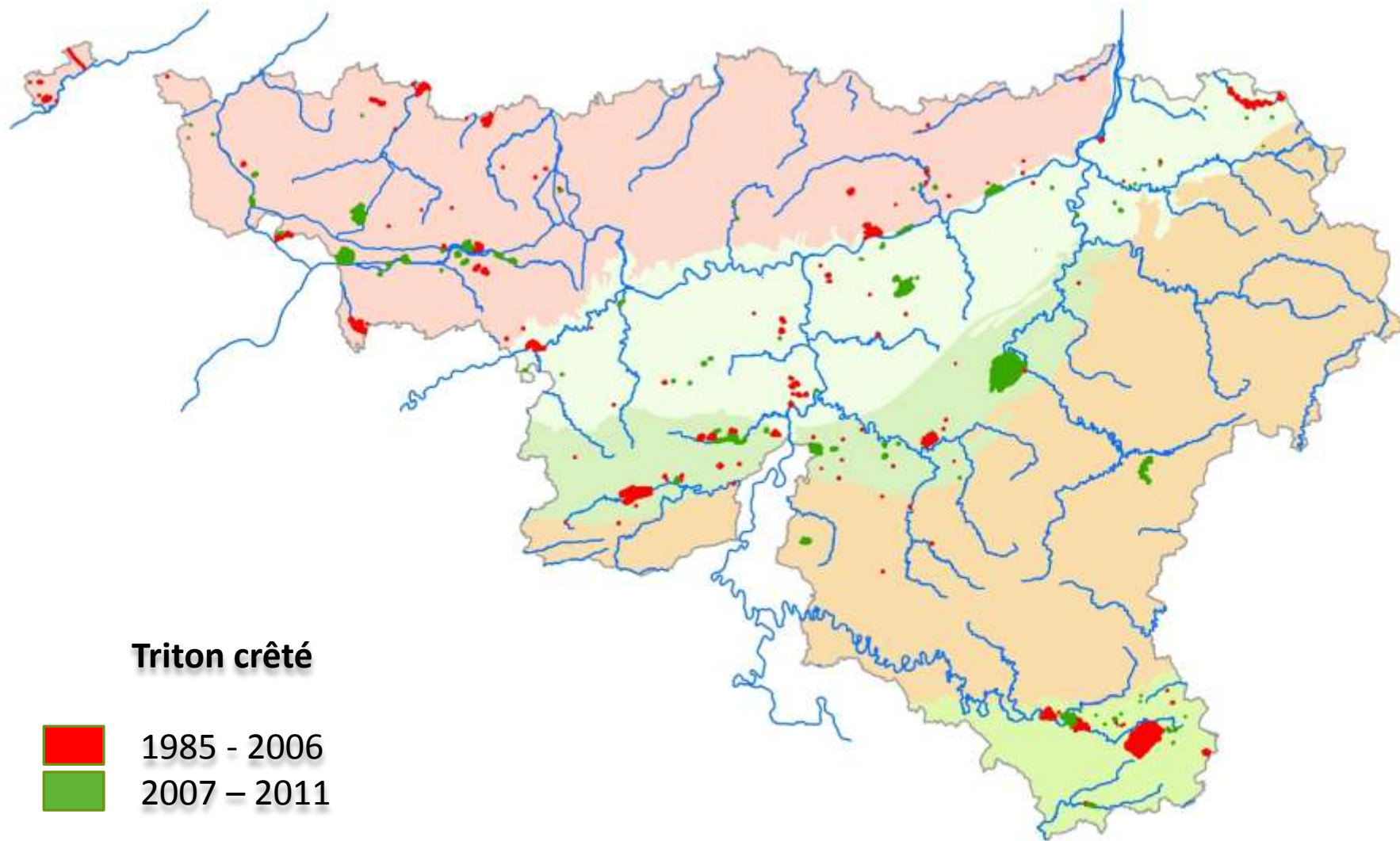
Triton crêté

- 2001 – 2011
- 1985 – 2000
- avant 1985

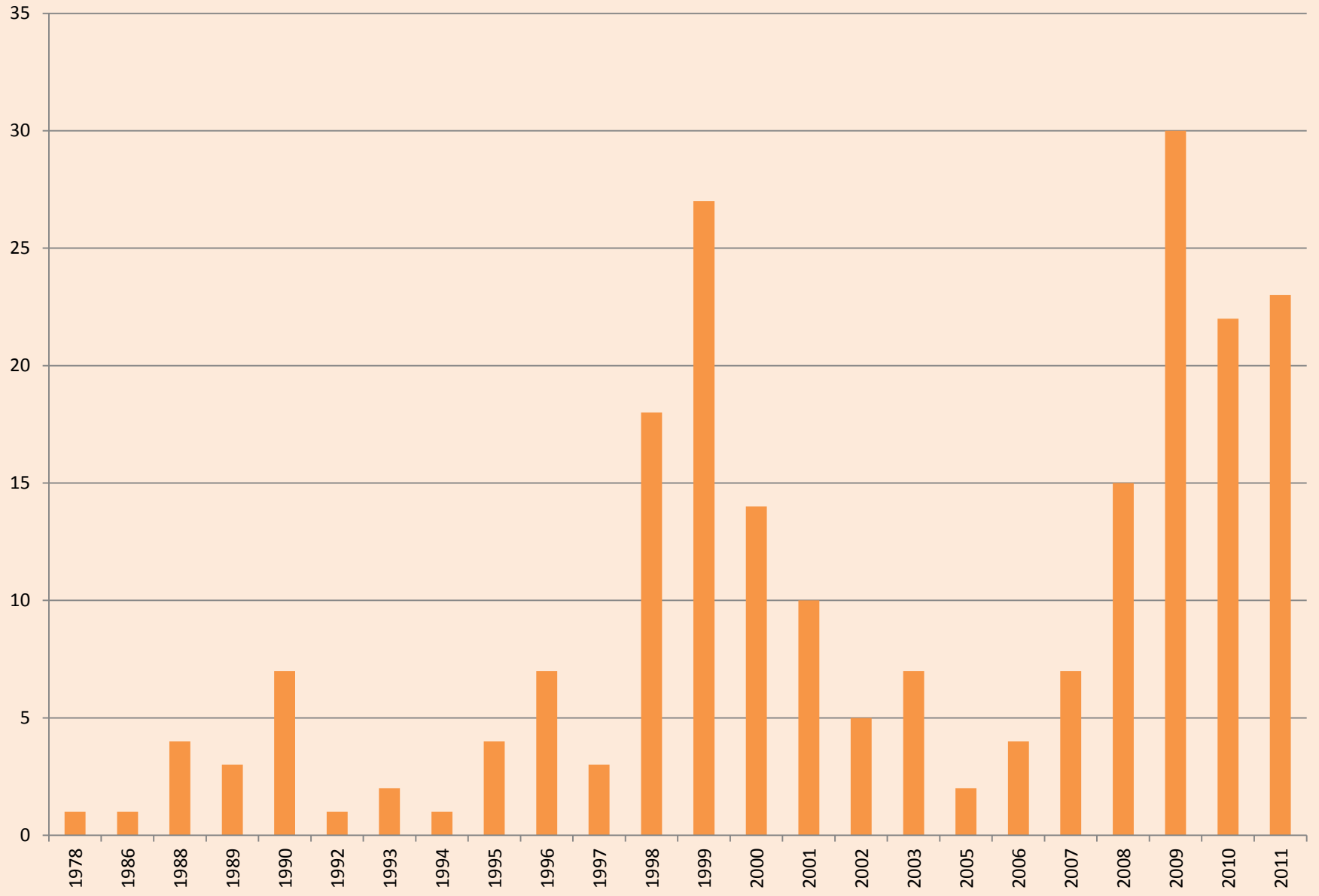


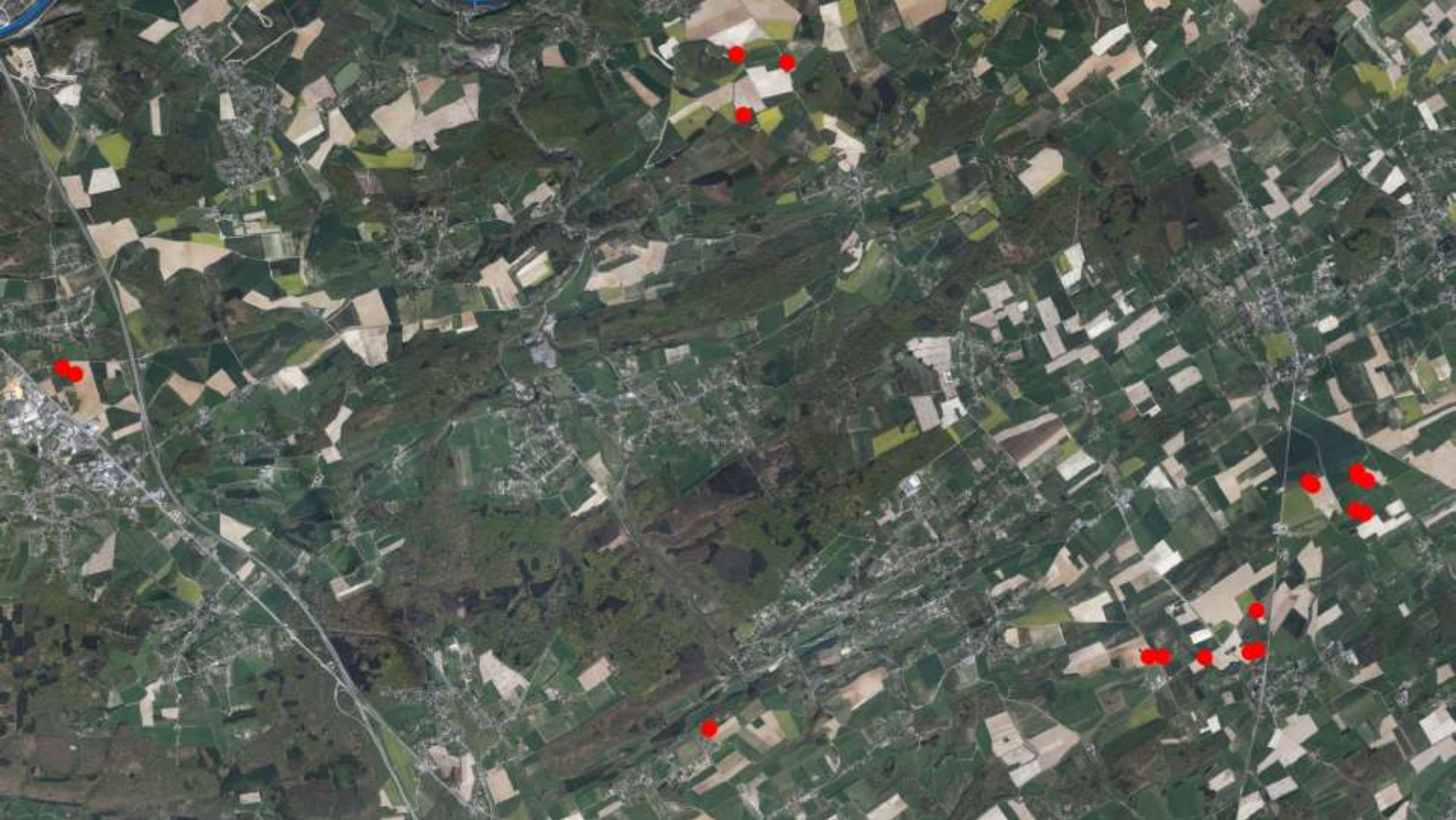
Triton crêté

● Après 2000 uniquement



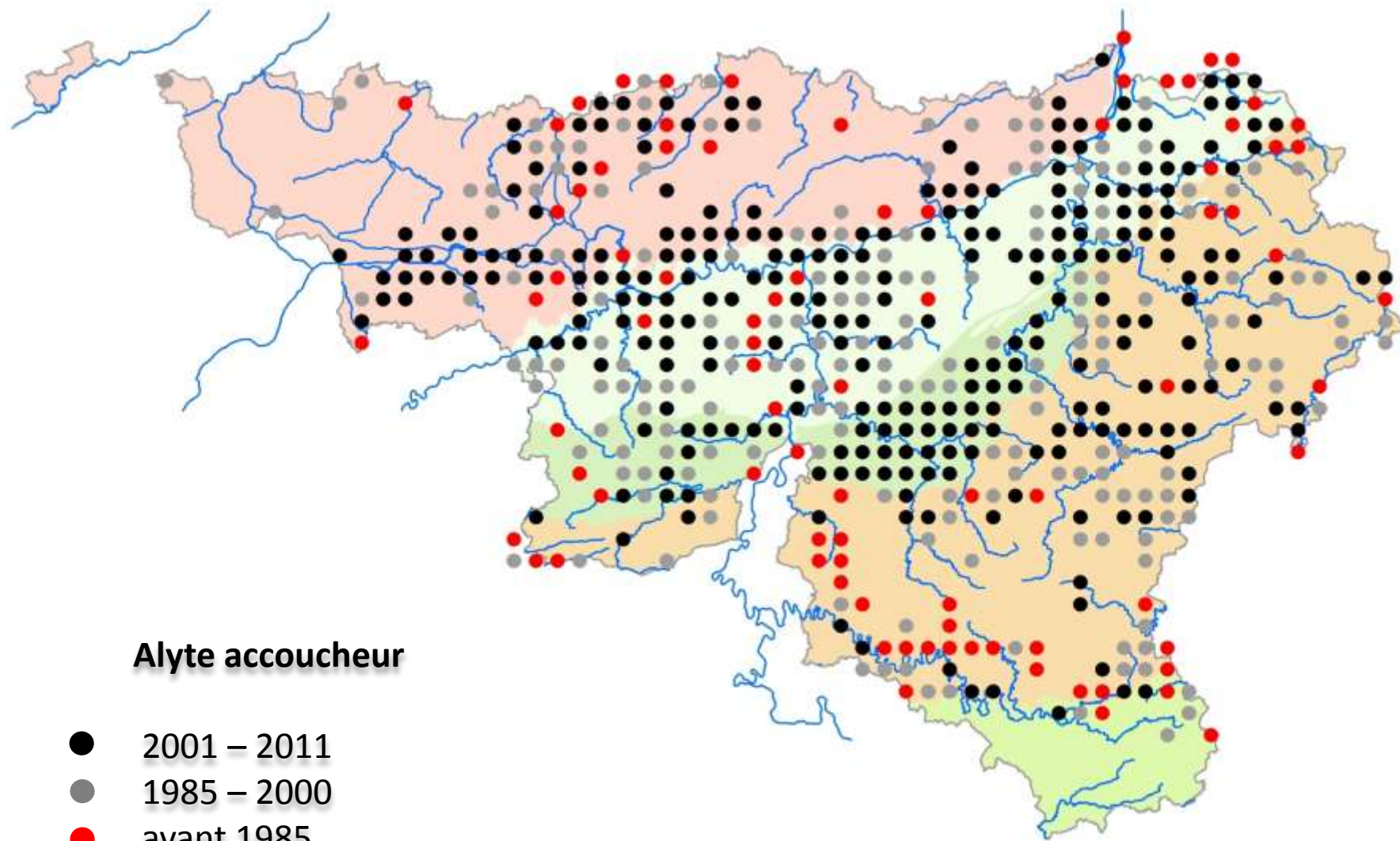
Dernière année d'observation par site





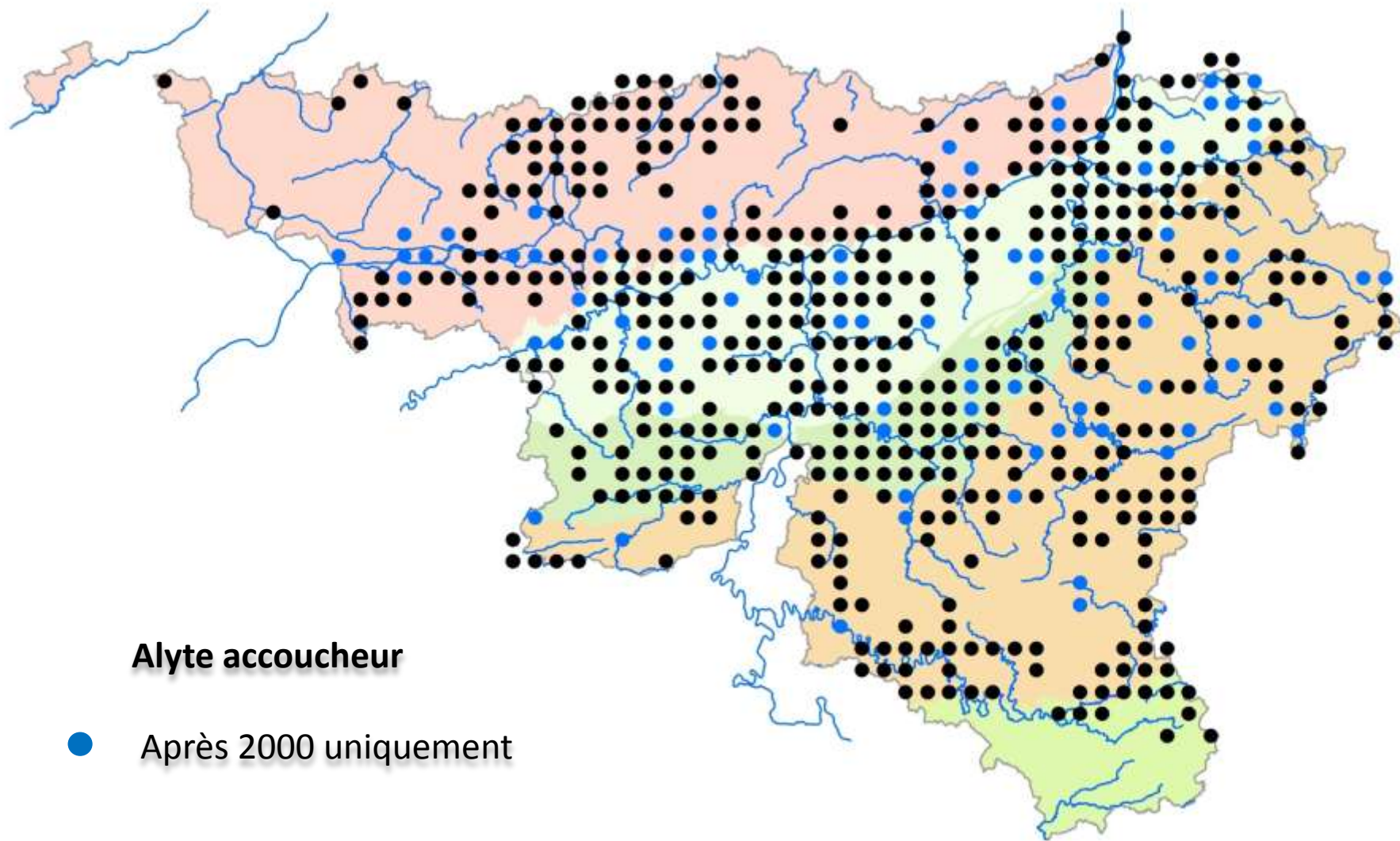
Alyte accoucheur



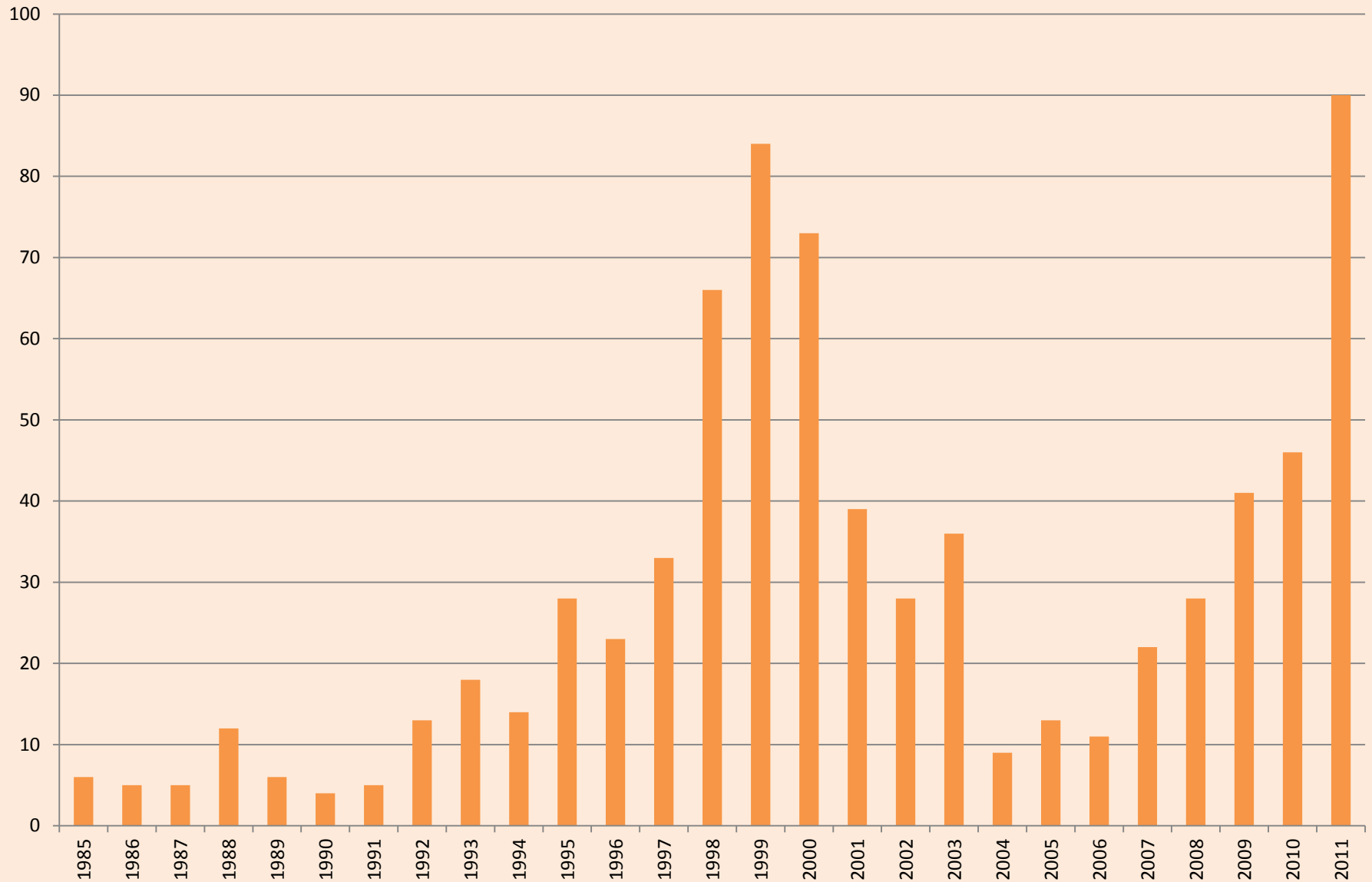


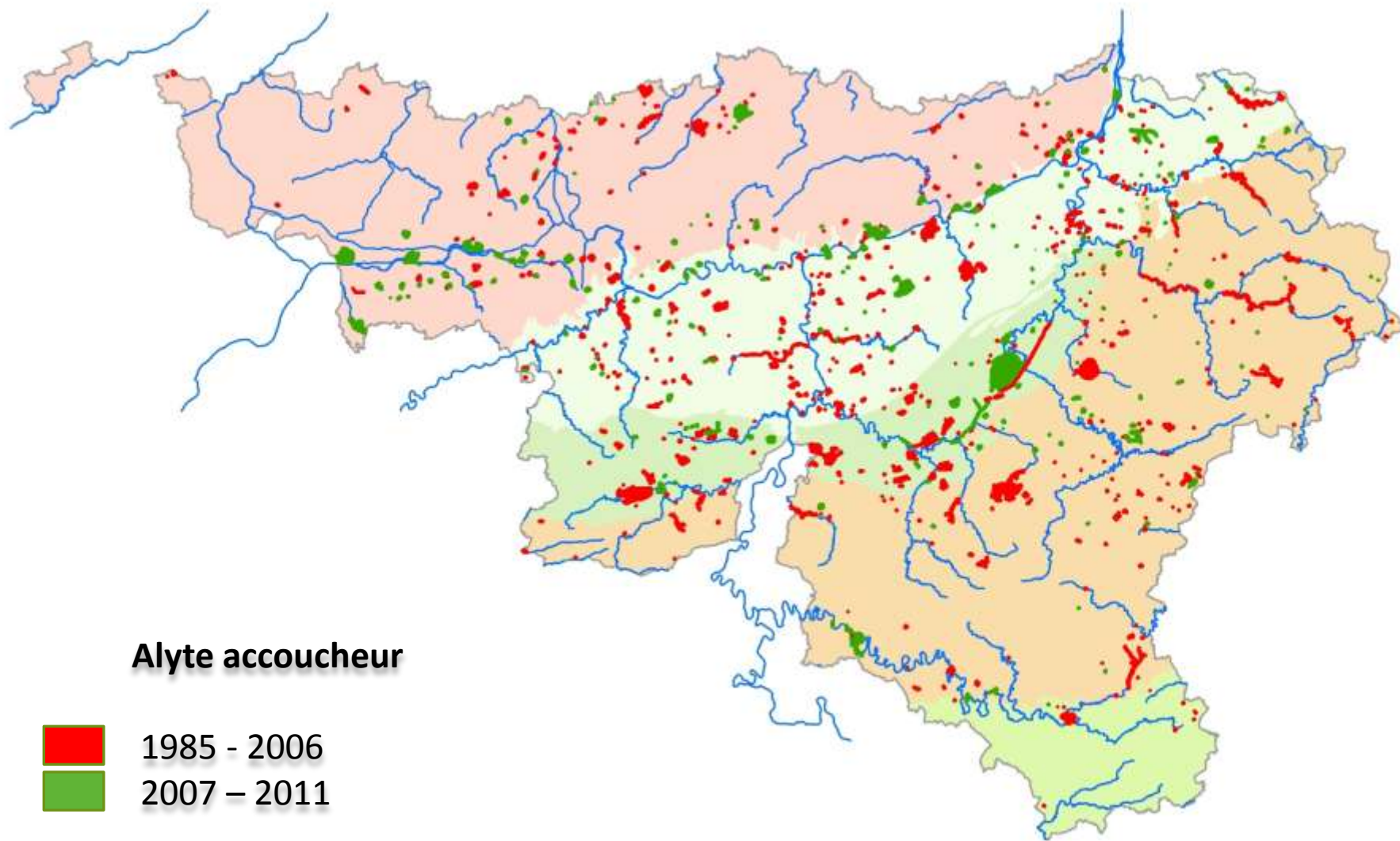
Alyte accoucheur

- 2001 – 2011
- 1985 – 2000
- avant 1985



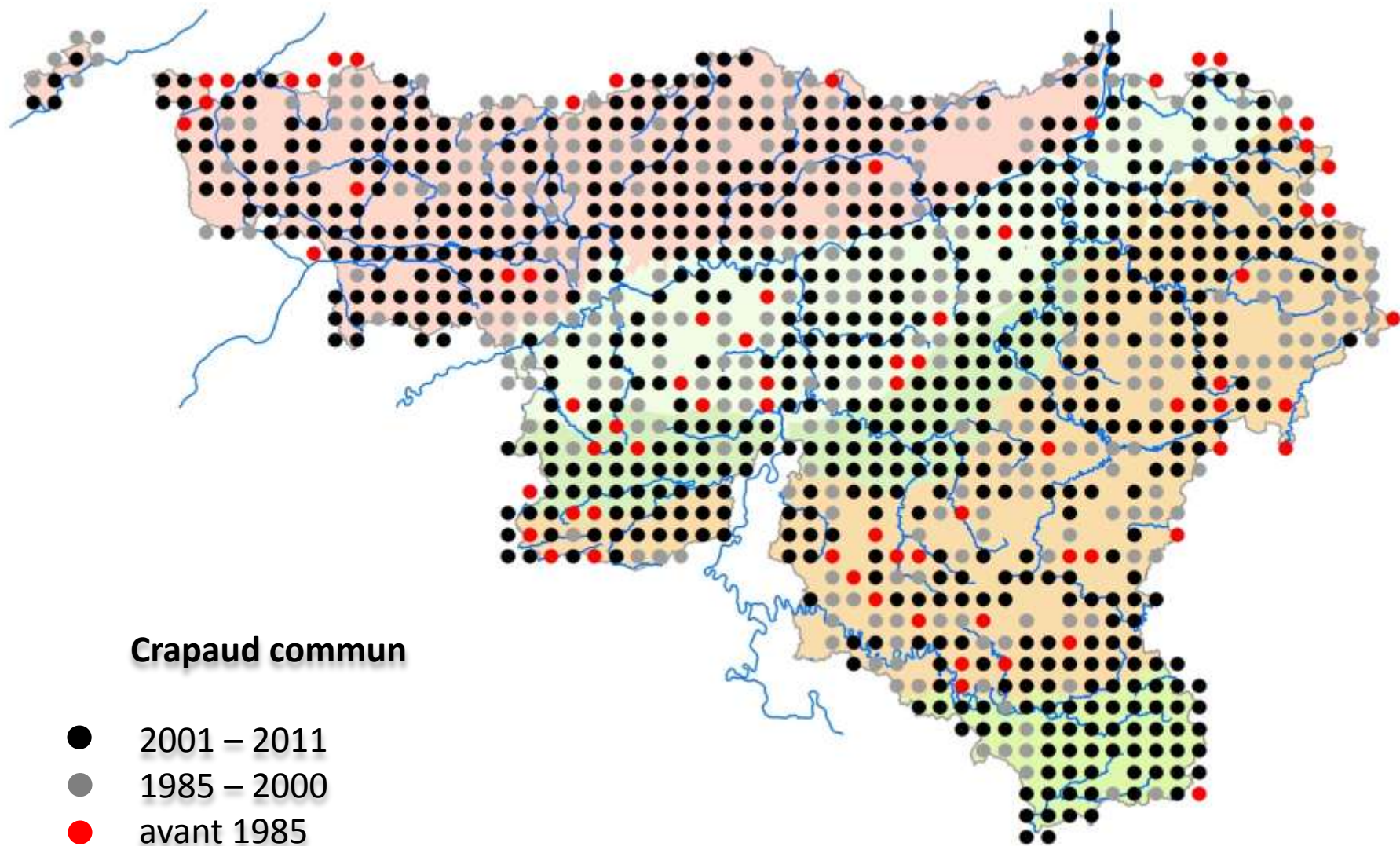
Dernière année d'observation par site

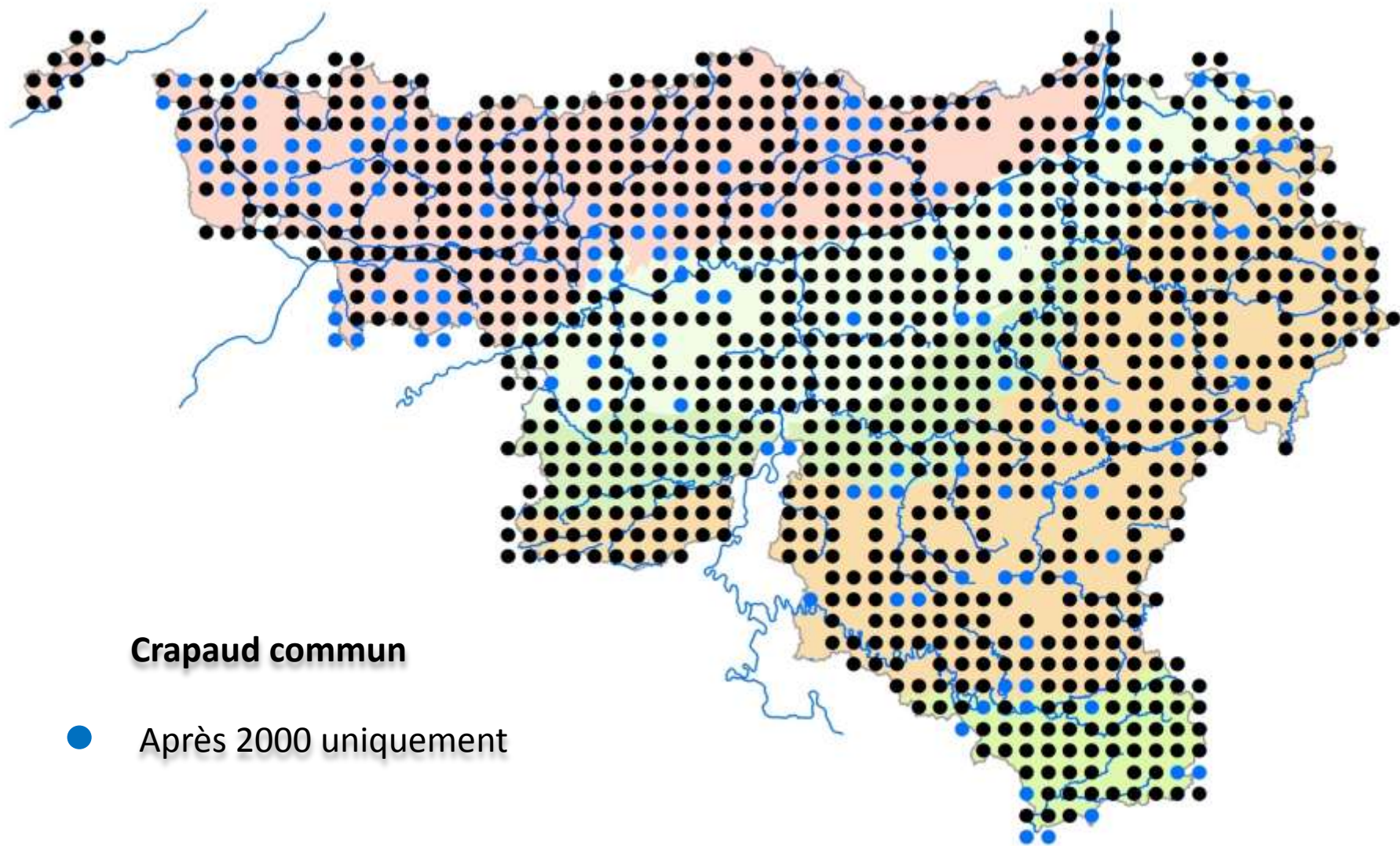




Crapaud commun

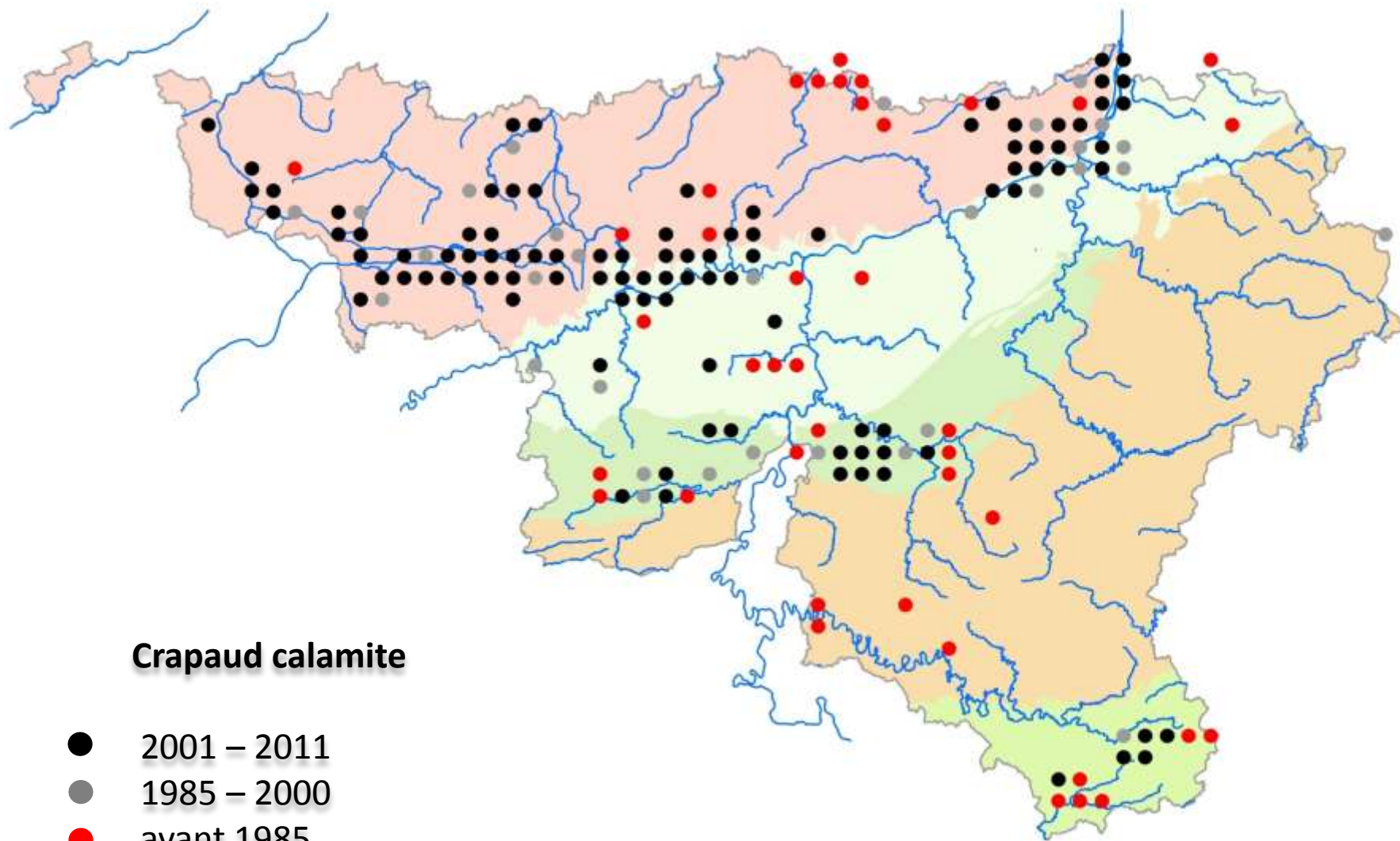


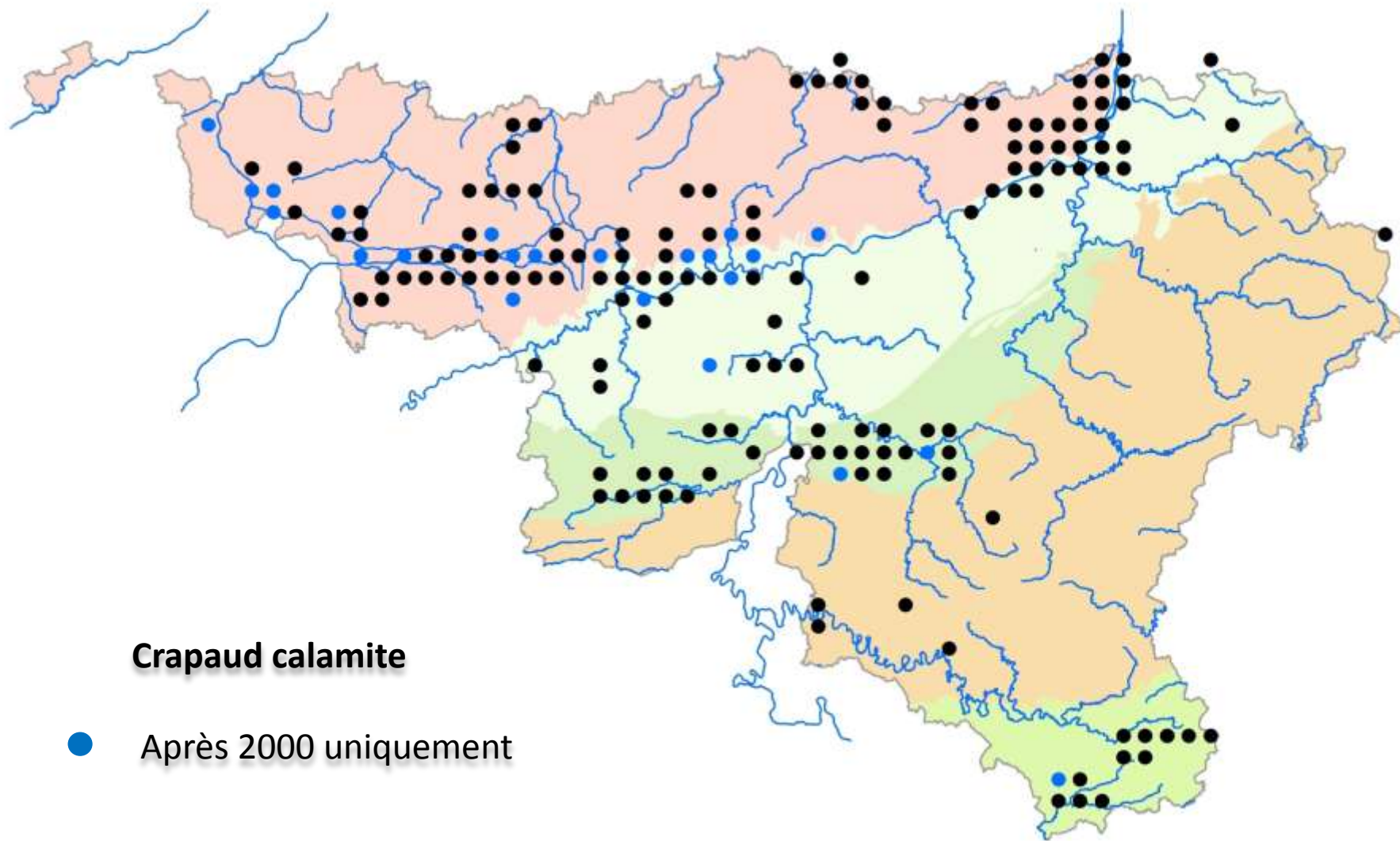


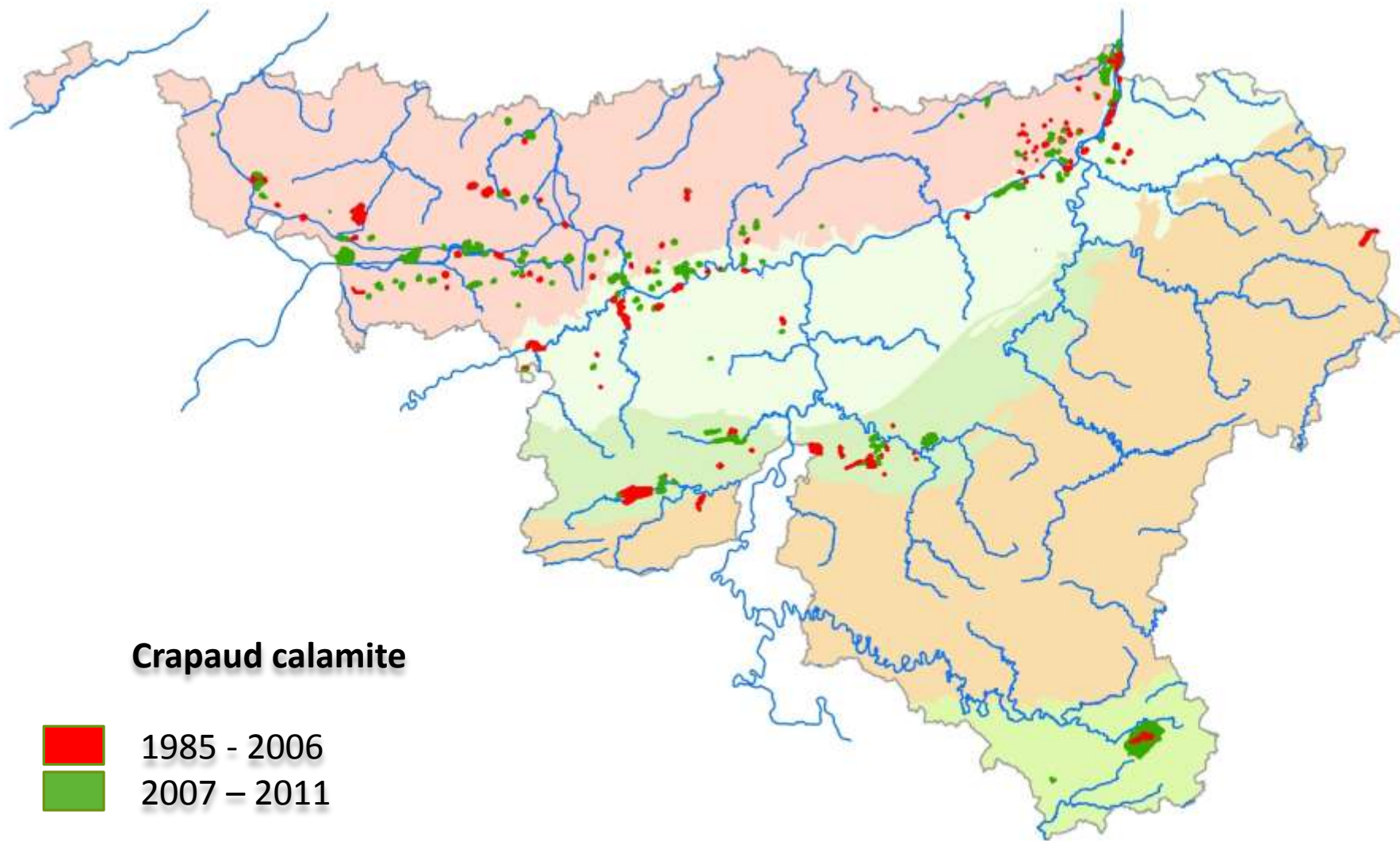


Crapaud calamite



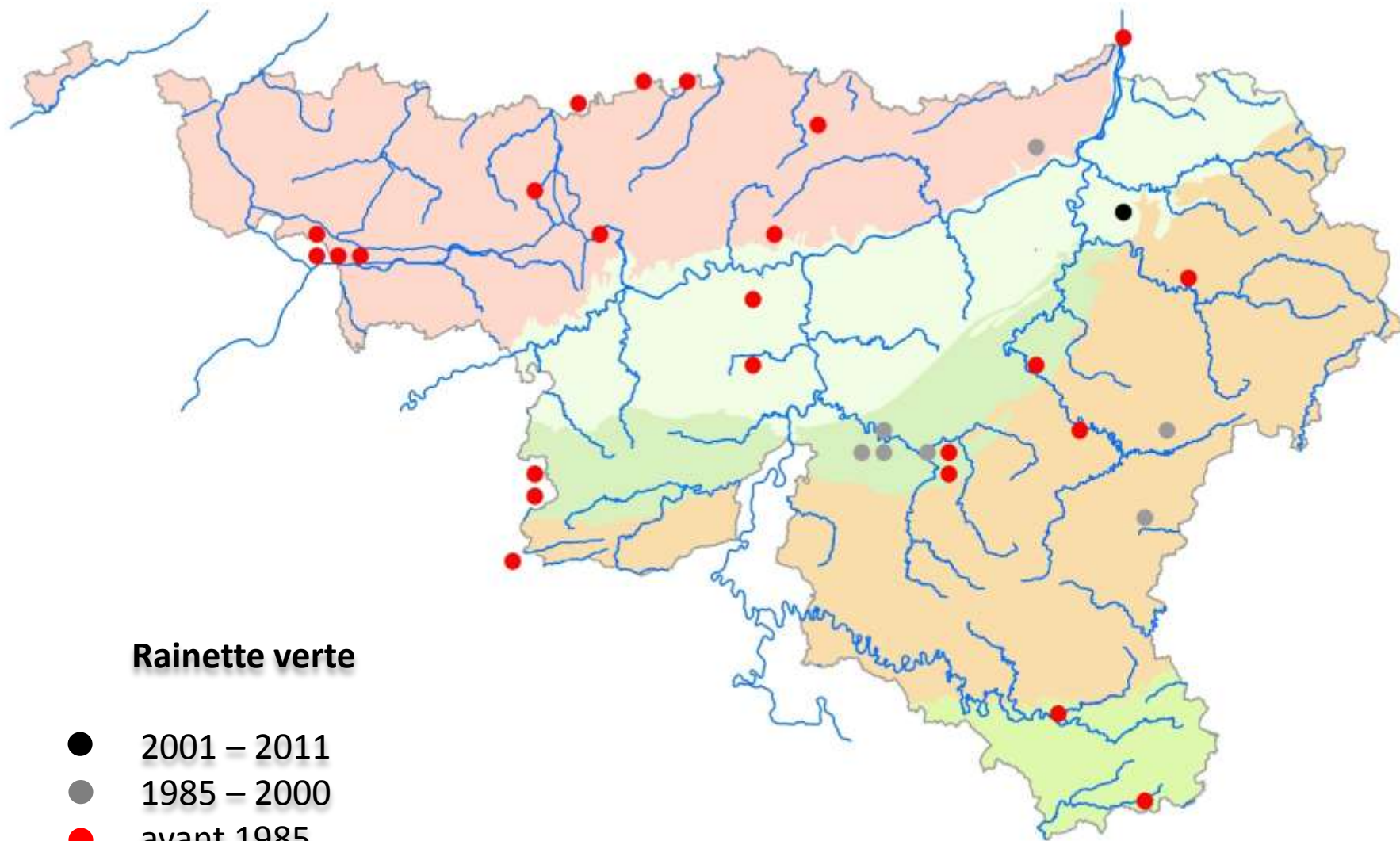






Rainette verte



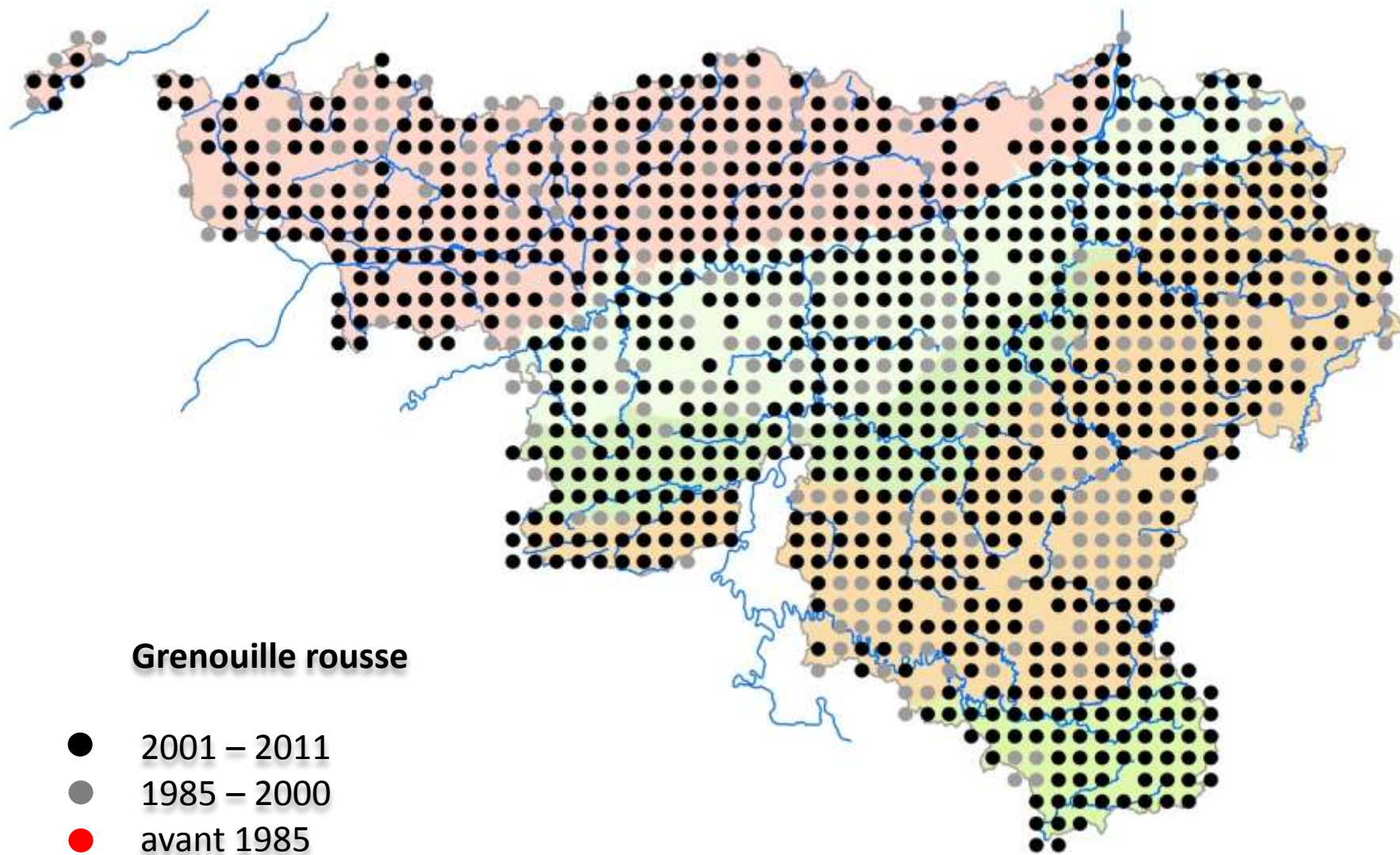


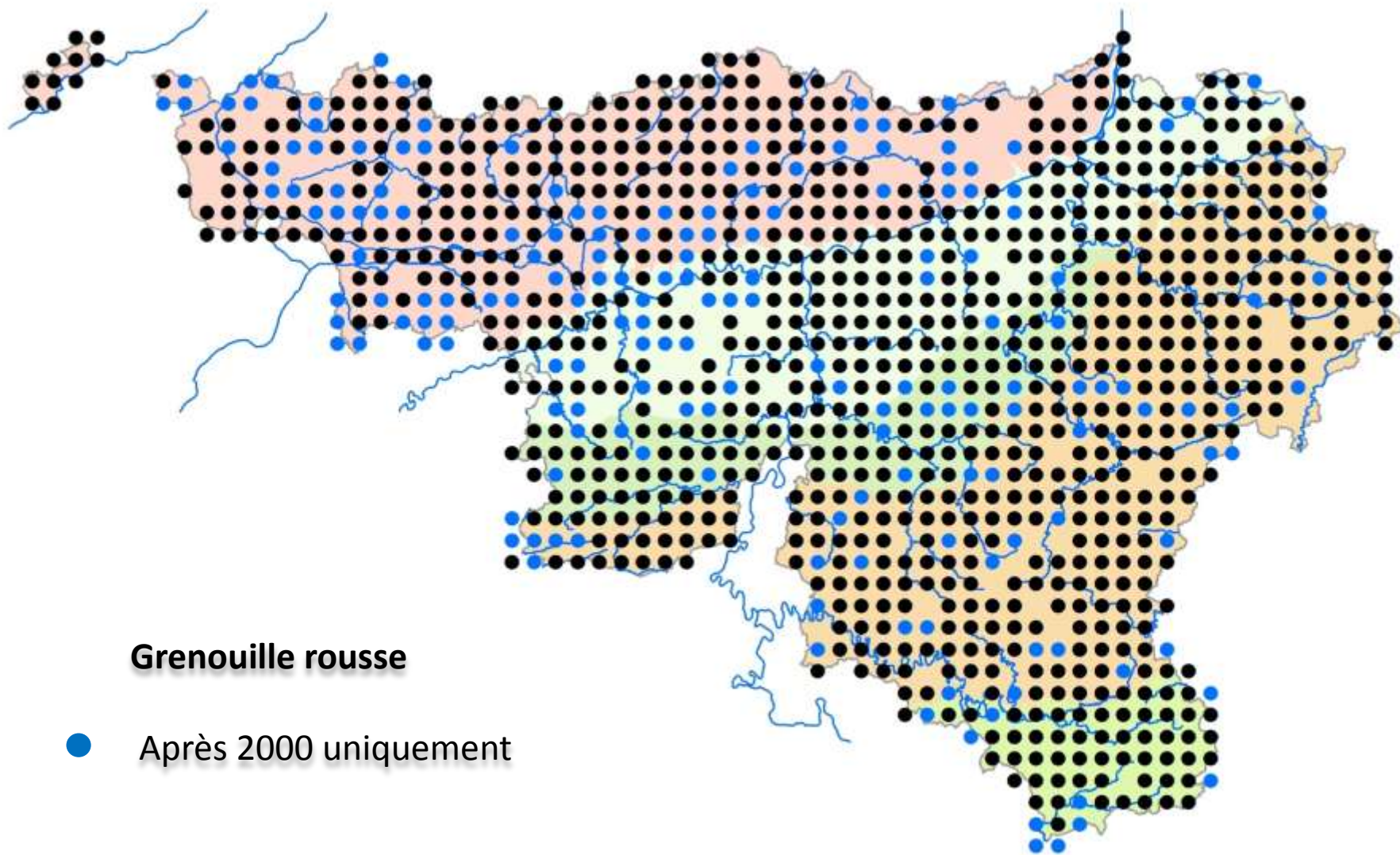
Rainette verte

- 2001 – 2011
- 1985 – 2000
- avant 1985

Grenouille rousse





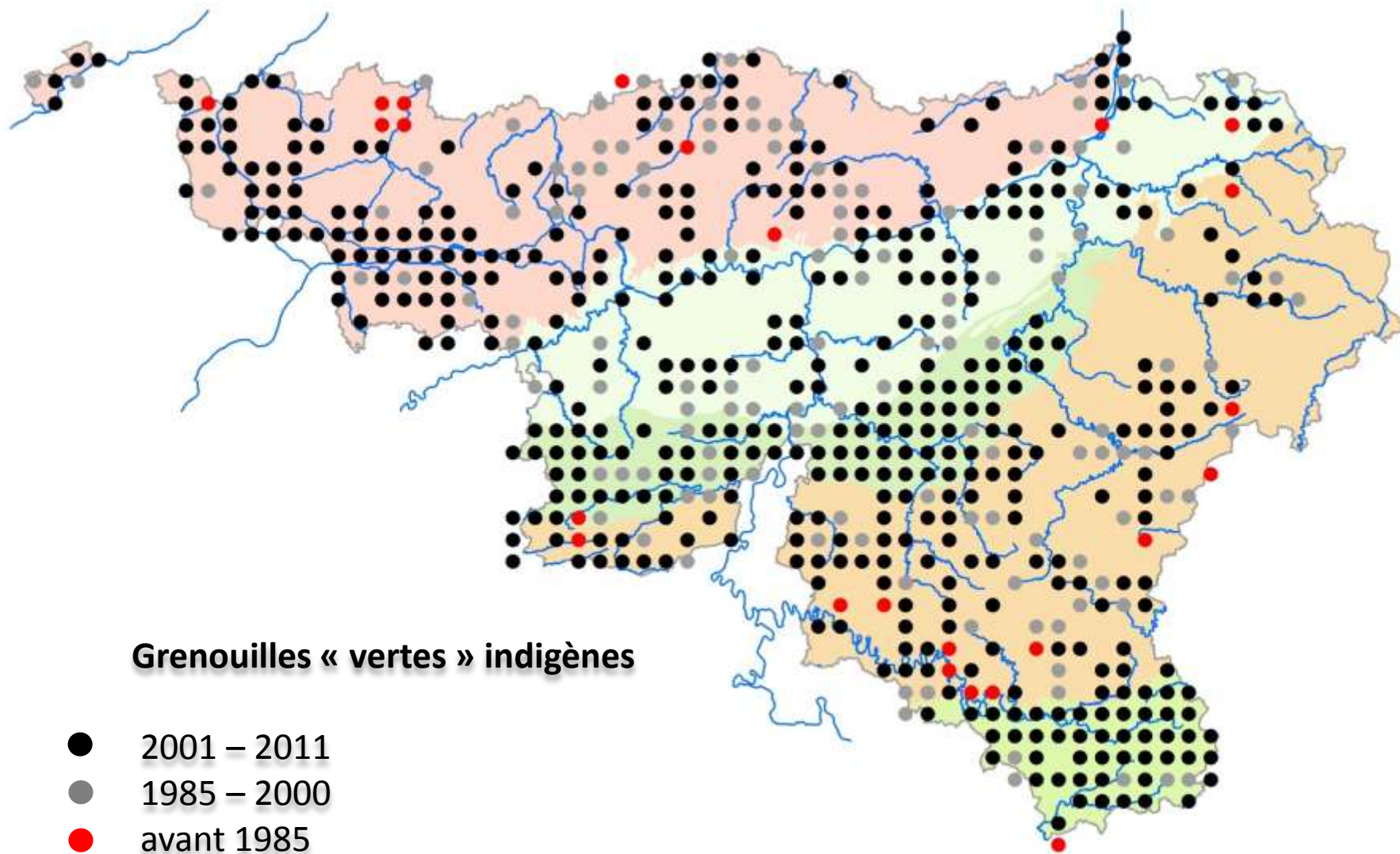


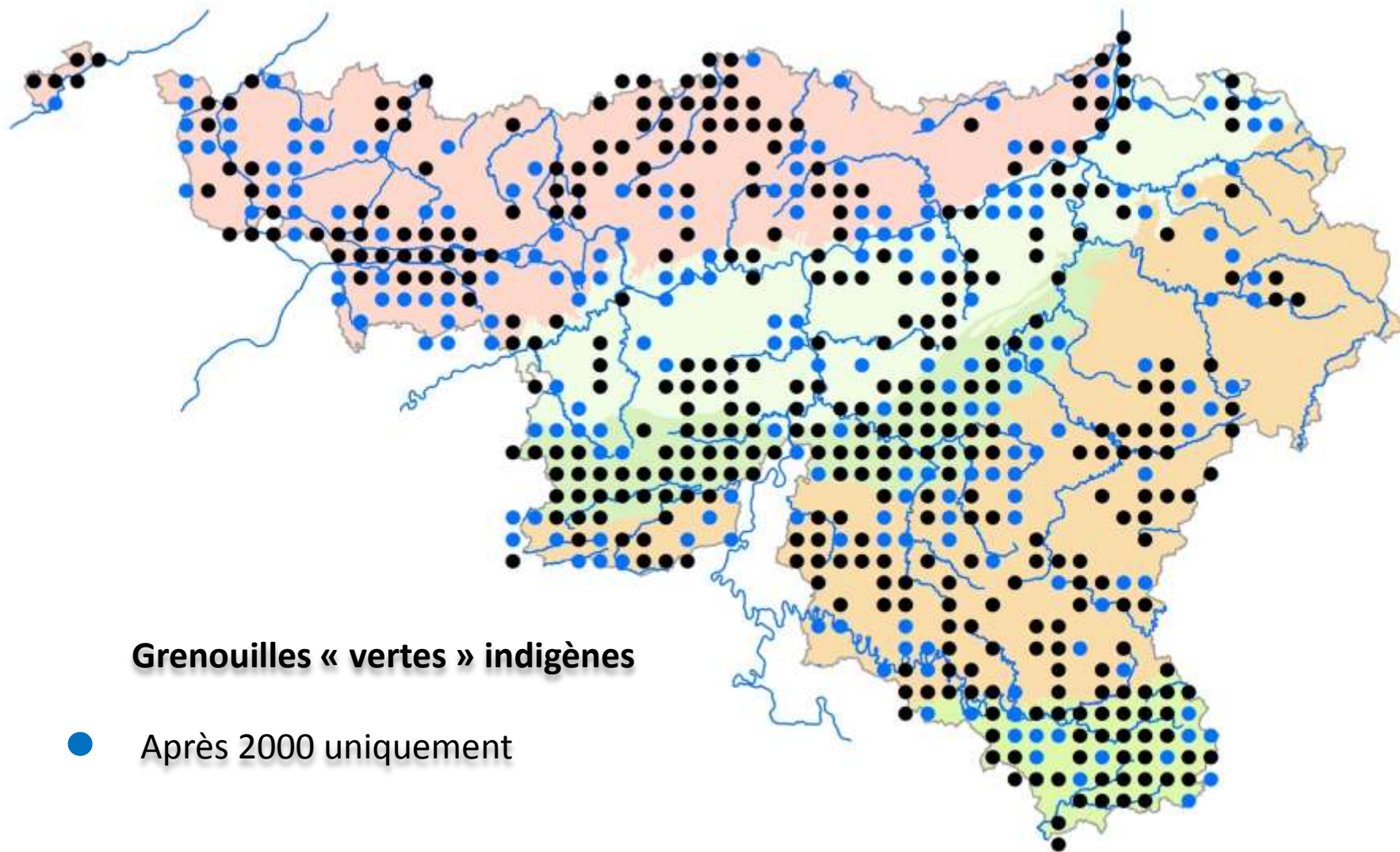
Grenouille rousse

● Après 2000 uniquement

Grenouilles « vertes » indigènes

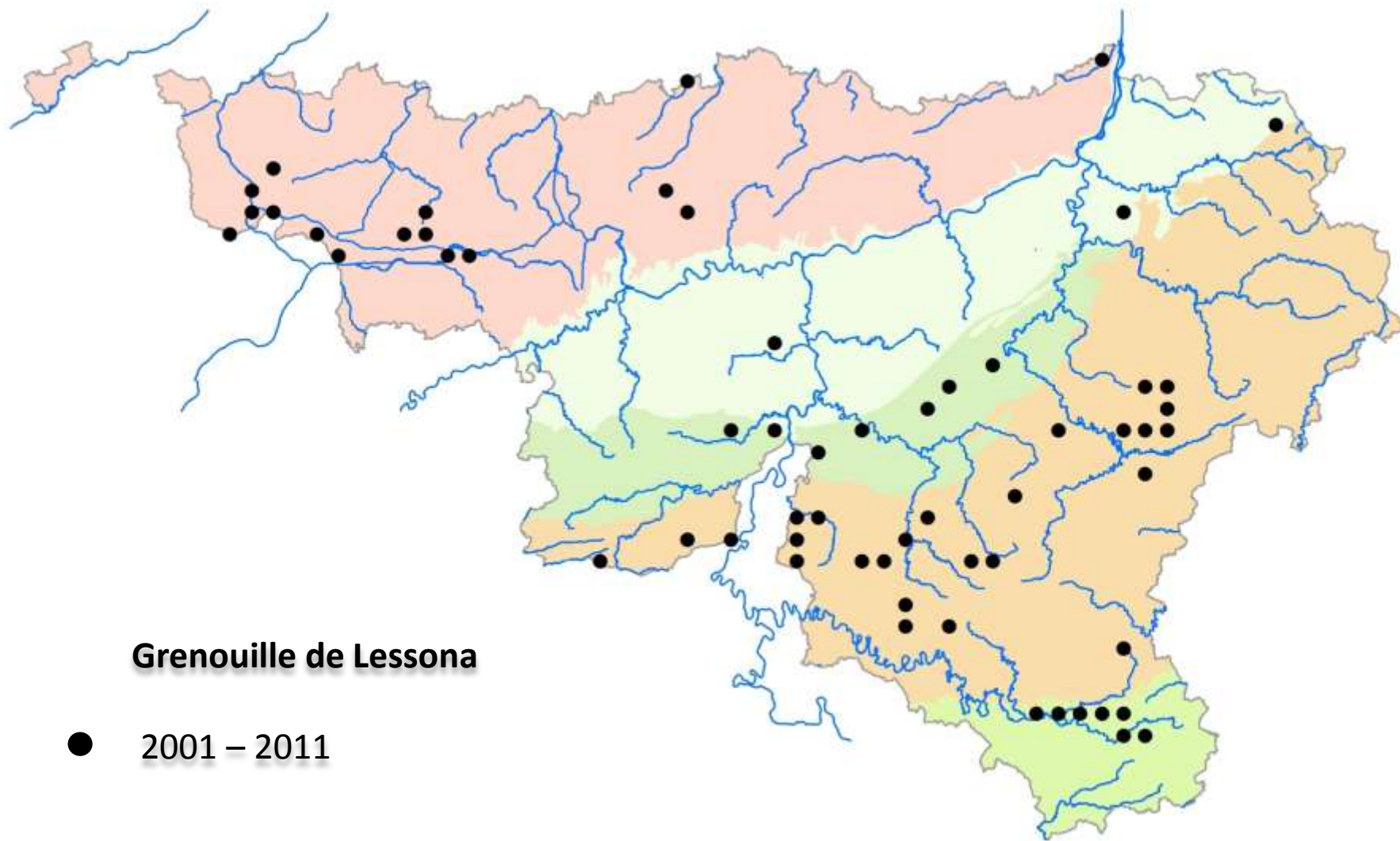






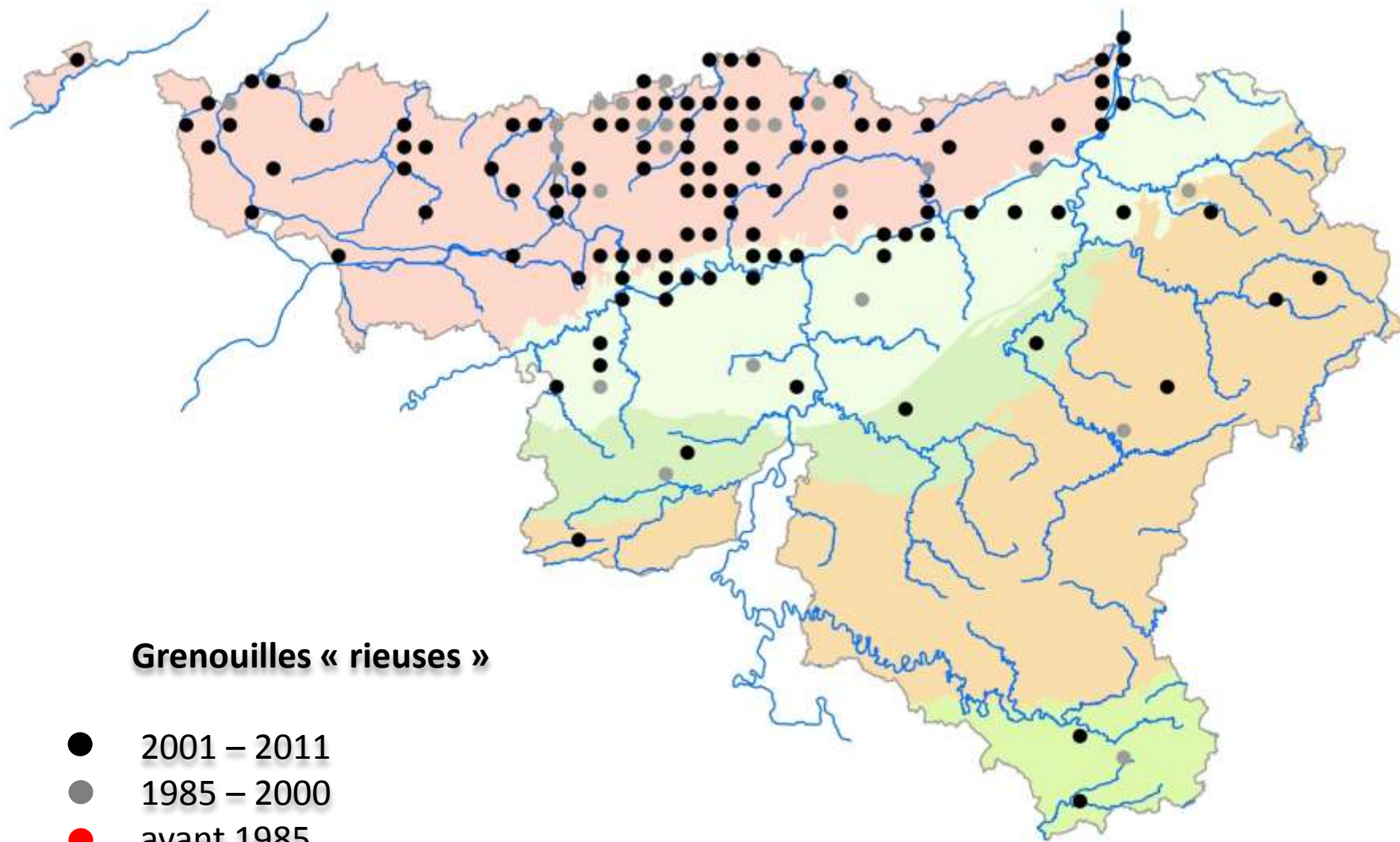
Grenouilles « vertes » indigènes

● Après 2000 uniquement



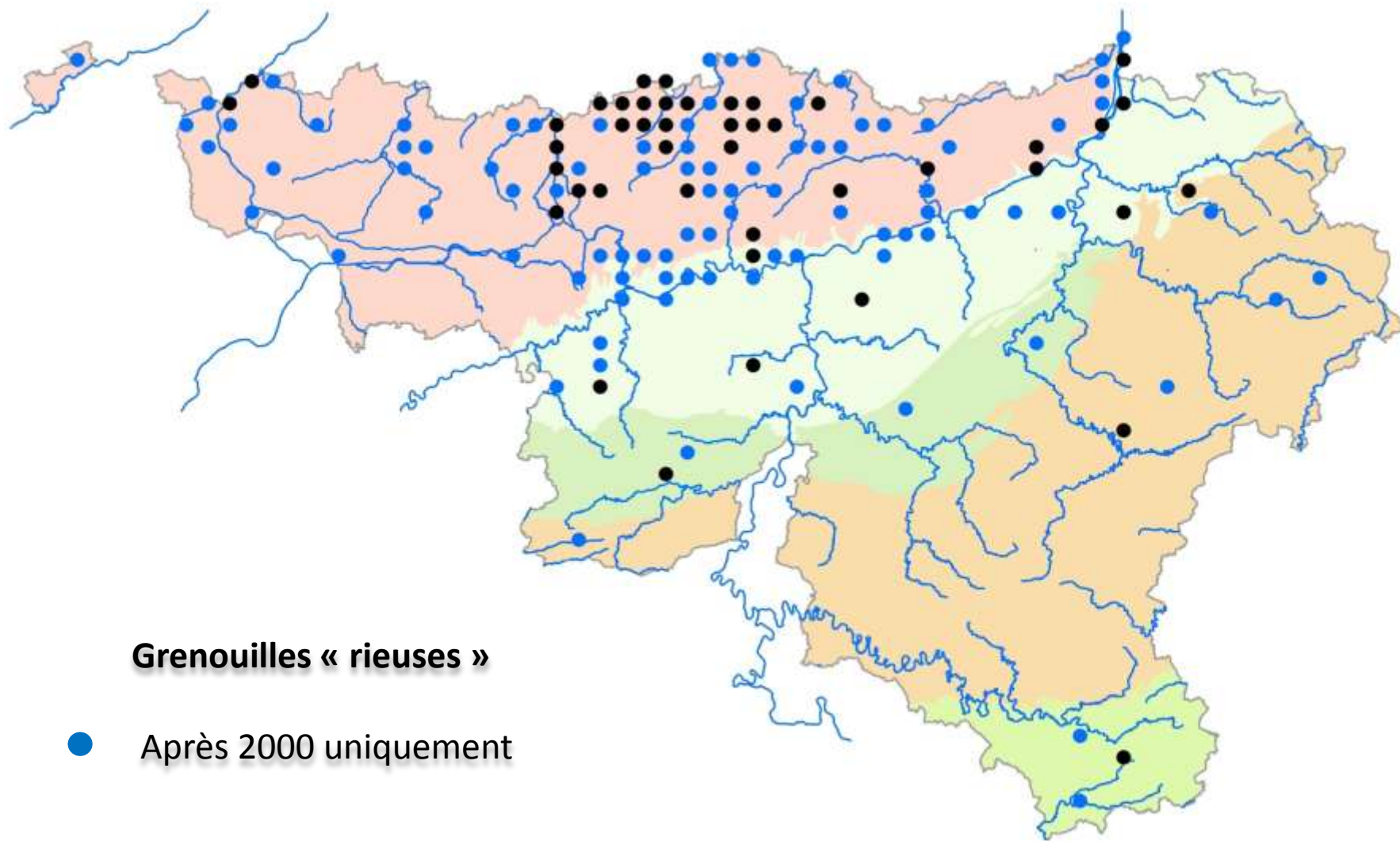
Grenouilles « rieuses »





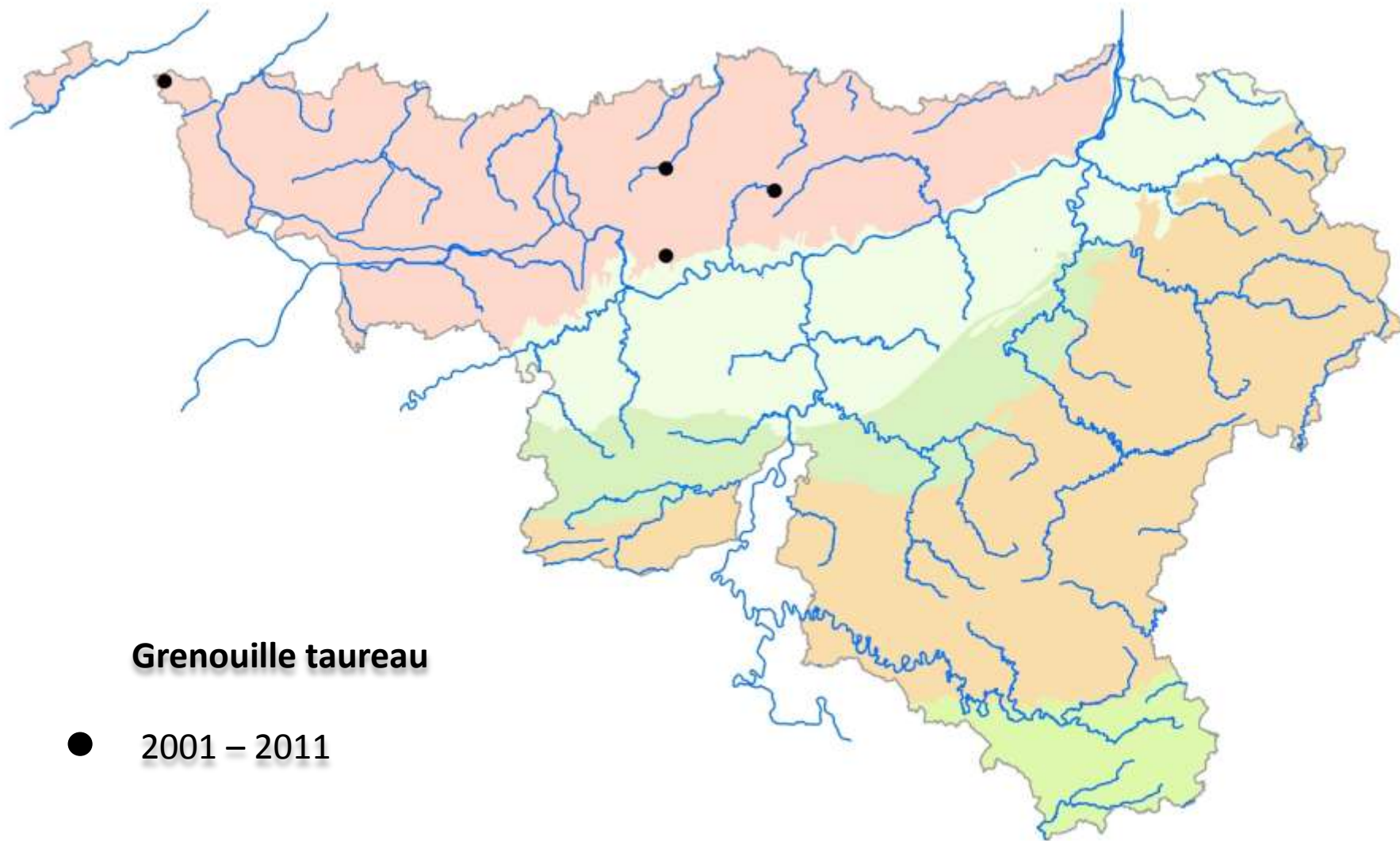
Grenouilles « rieuses »

- 2001 – 2011
- 1985 – 2000
- avant 1985



Grenouille taureau





Grenouille taureau

● 2001 – 2011