

Les reptiles de Wallonie

Bilan des connaissances et évolution récente

Journée des observateurs de Raîenne

29 janvier 2012 – Namur



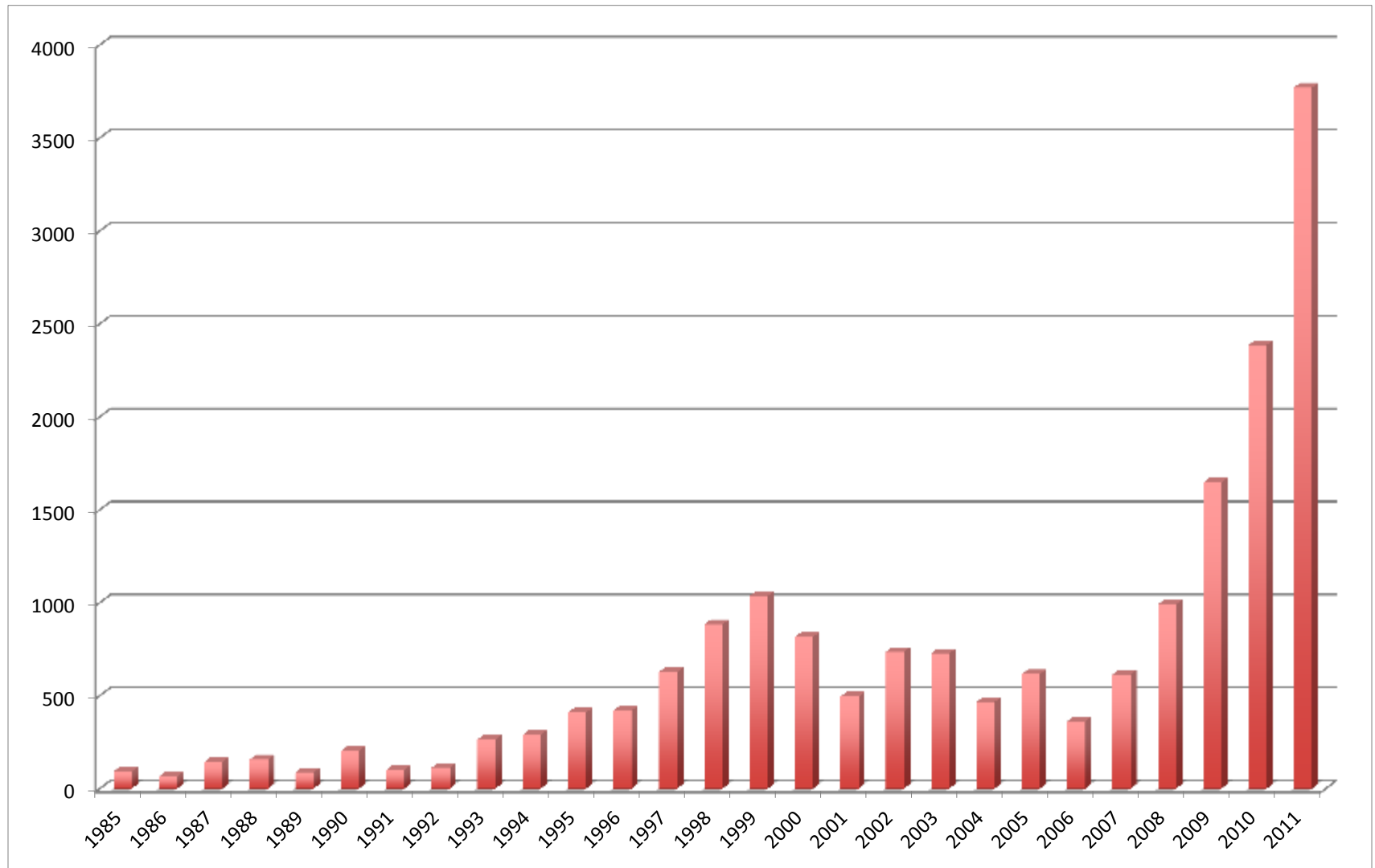
Wallonie

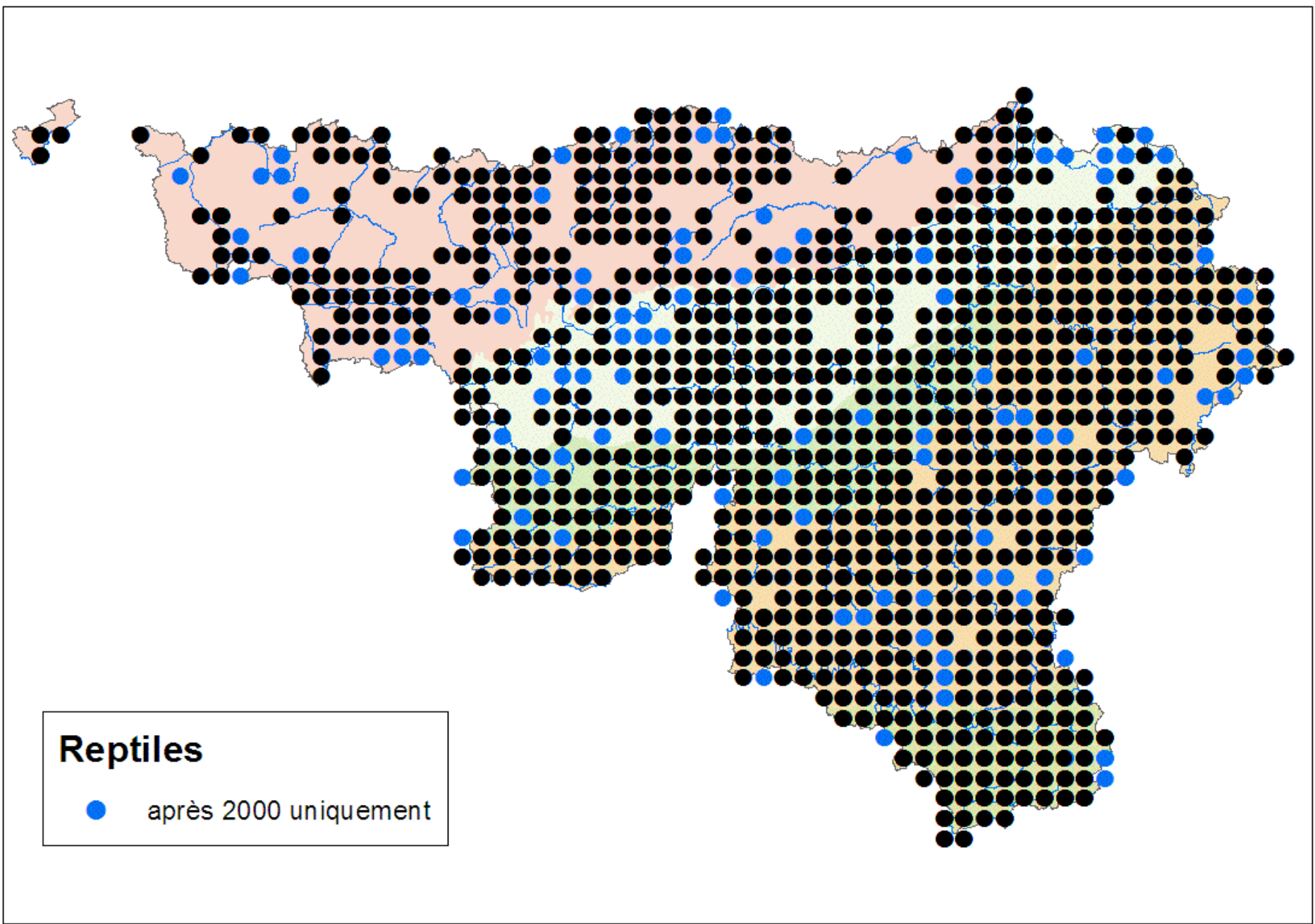


Service public
de Wallonie



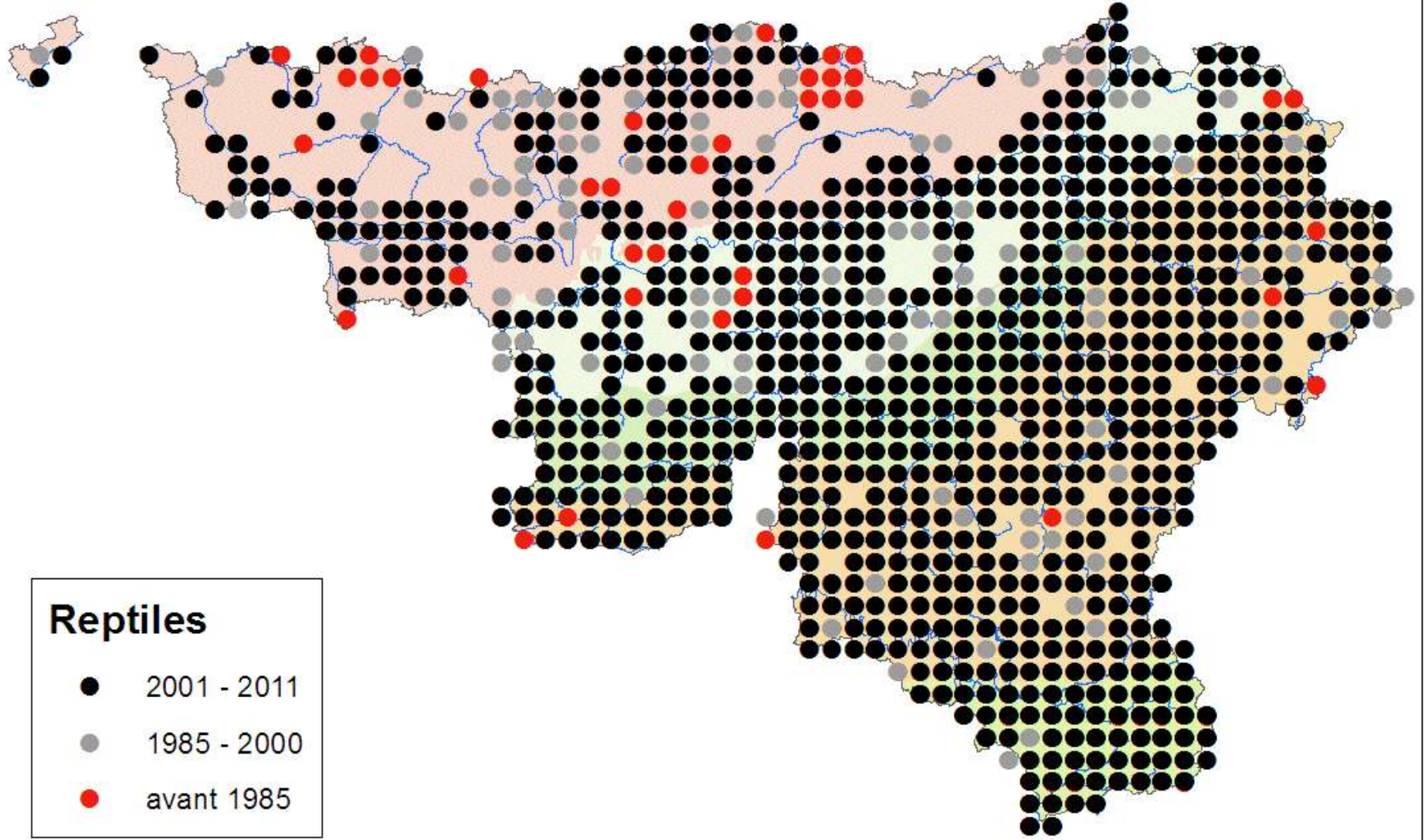
Evolution du nombre de données





Reptiles

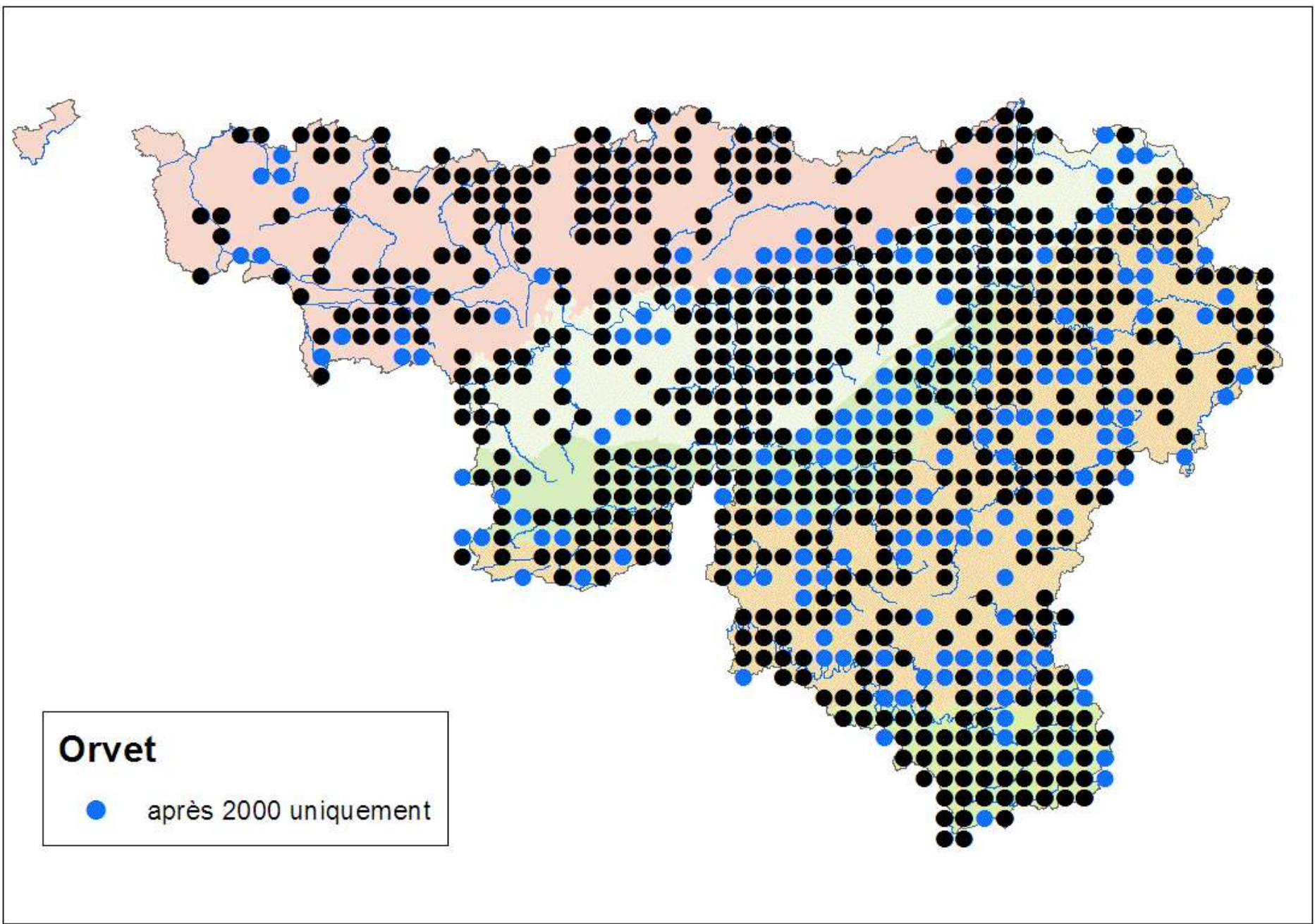
● après 2000 uniquement



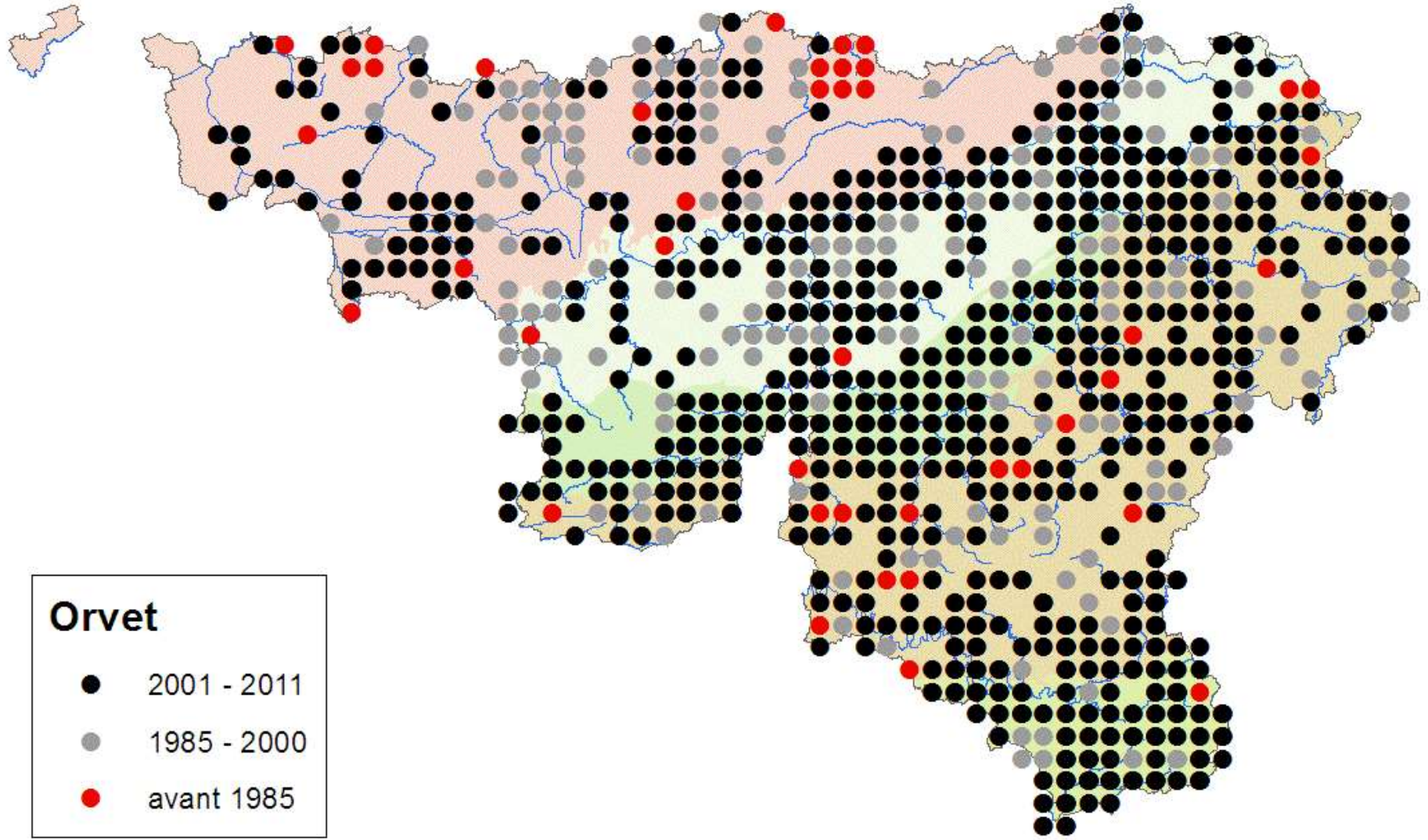
Reptiles

- 2001 - 2011
- 1985 - 2000
- avant 1985





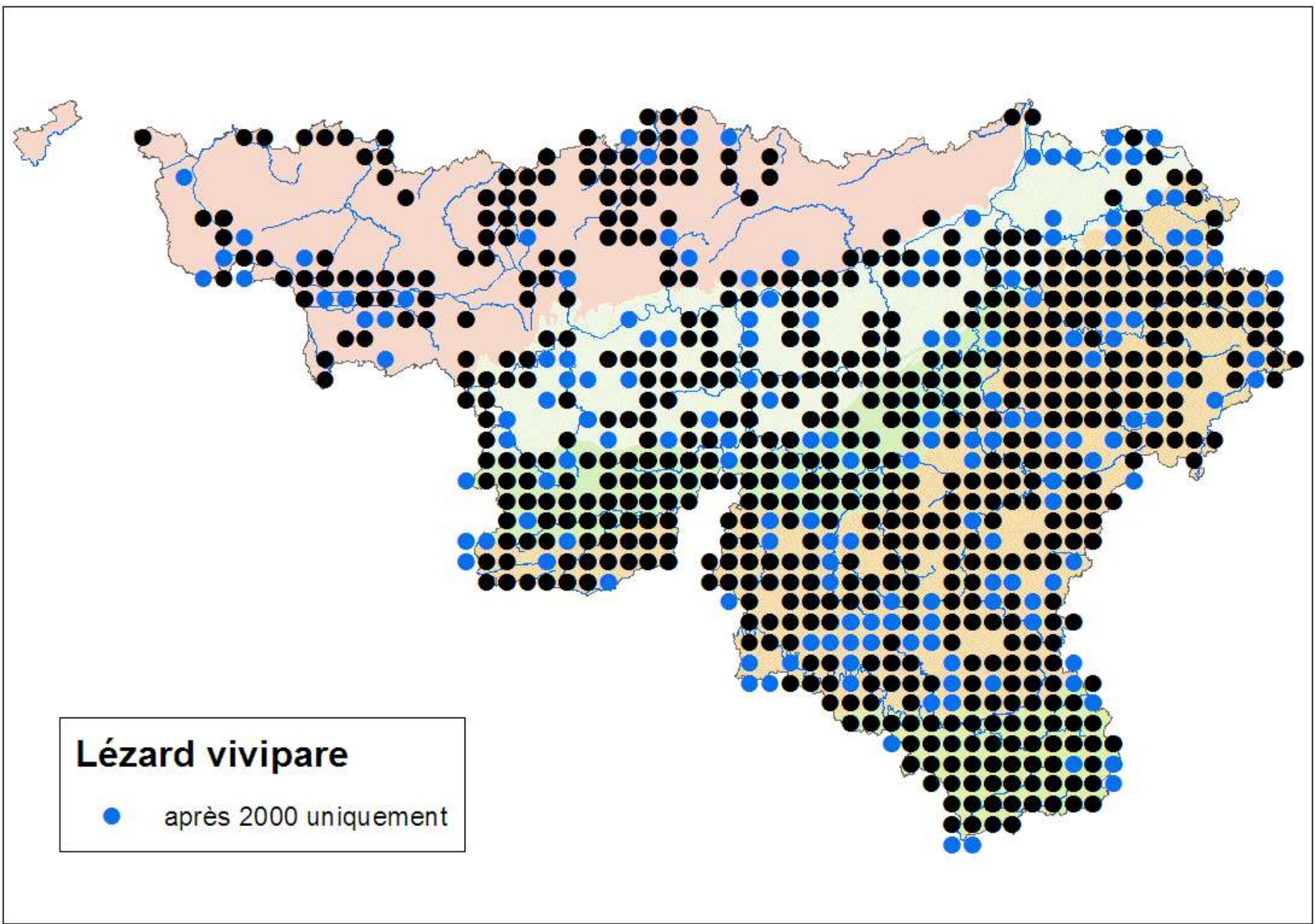
Orvet
● après 2000 uniquement



Orvet

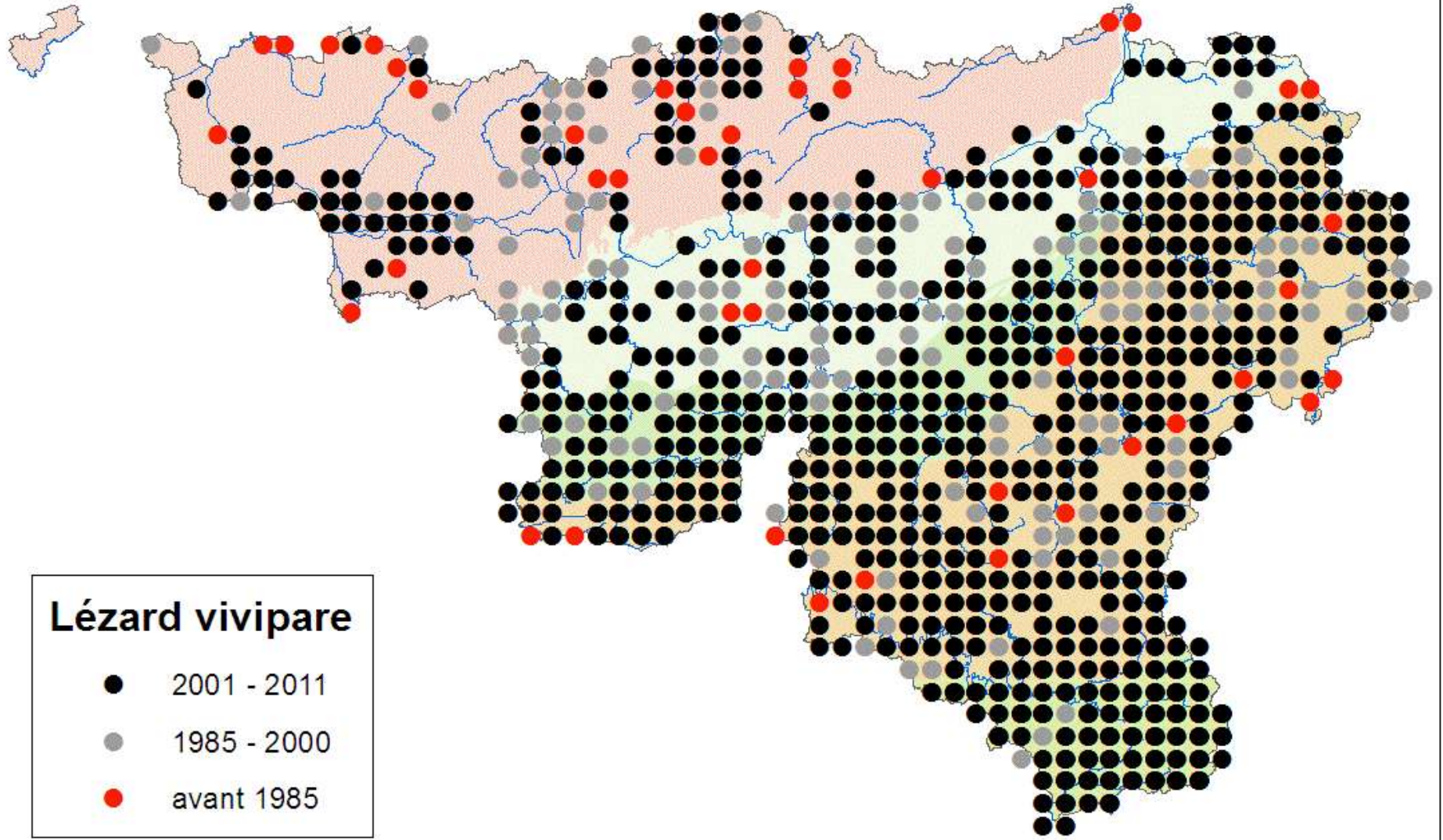
- 2001 - 2011
- 1985 - 2000
- avant 1985





Lézard vivipare

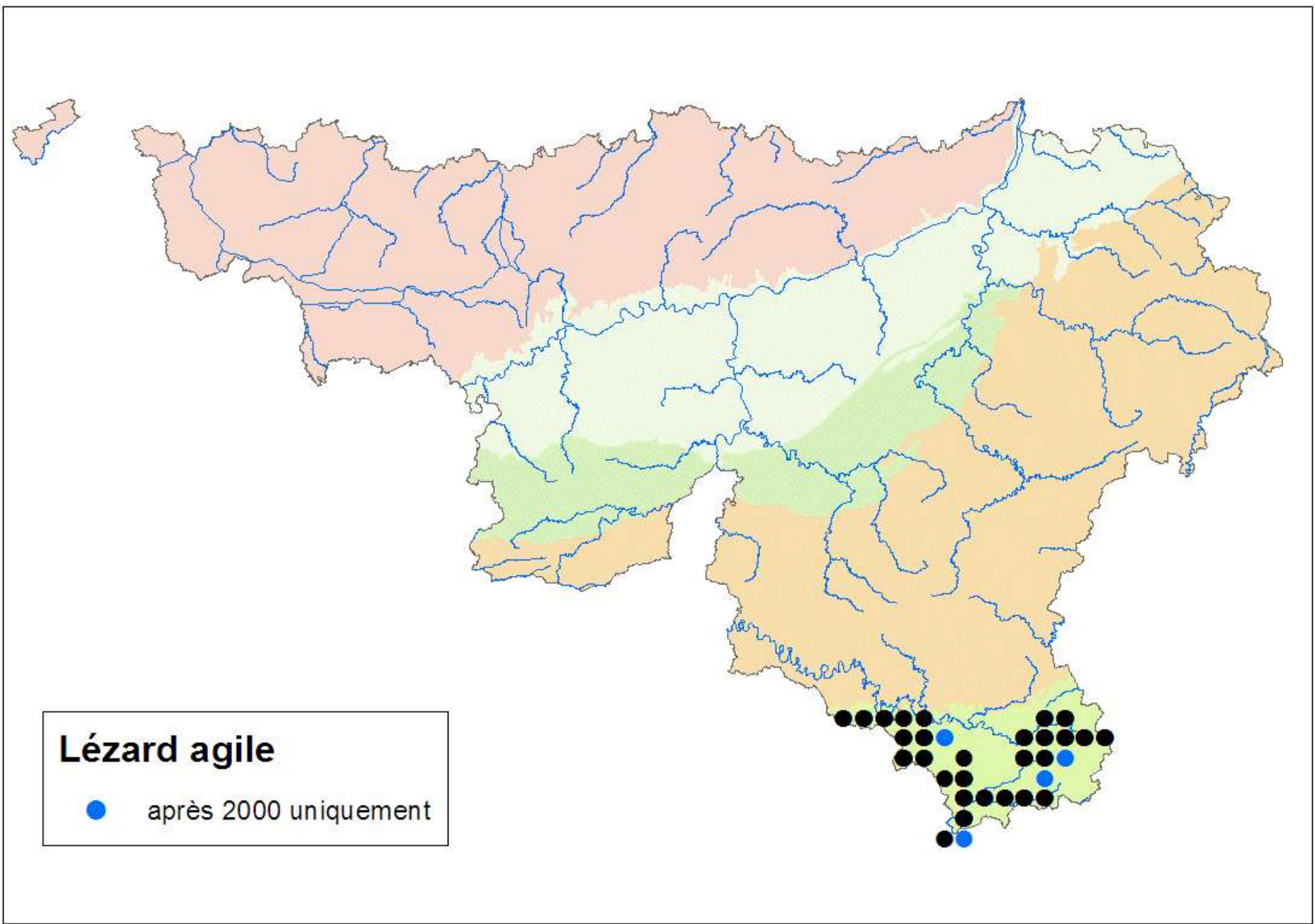
● après 2000 uniquement



Lézard vivipare

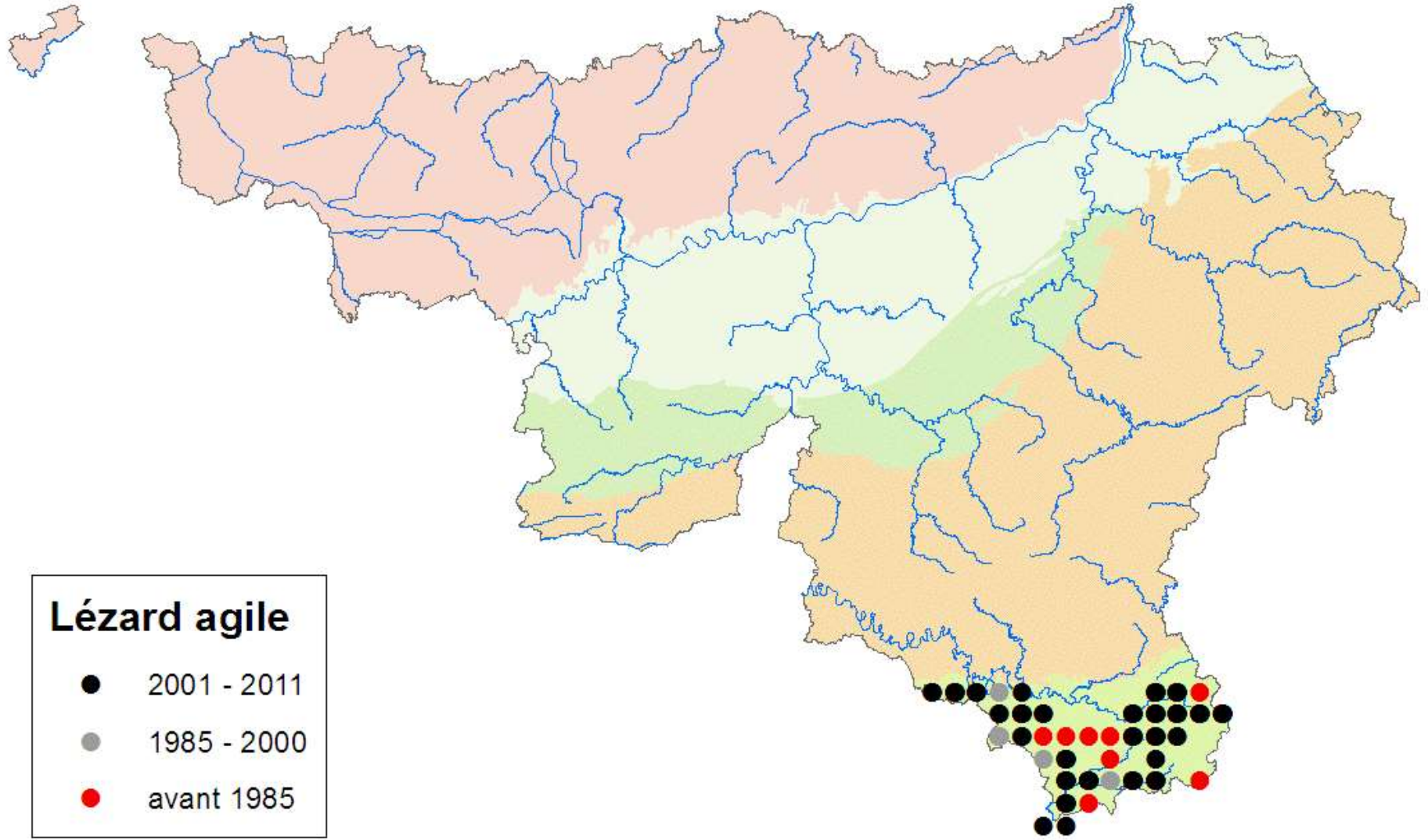
- 2001 - 2011
- 1985 - 2000
- avant 1985





Lézard agile

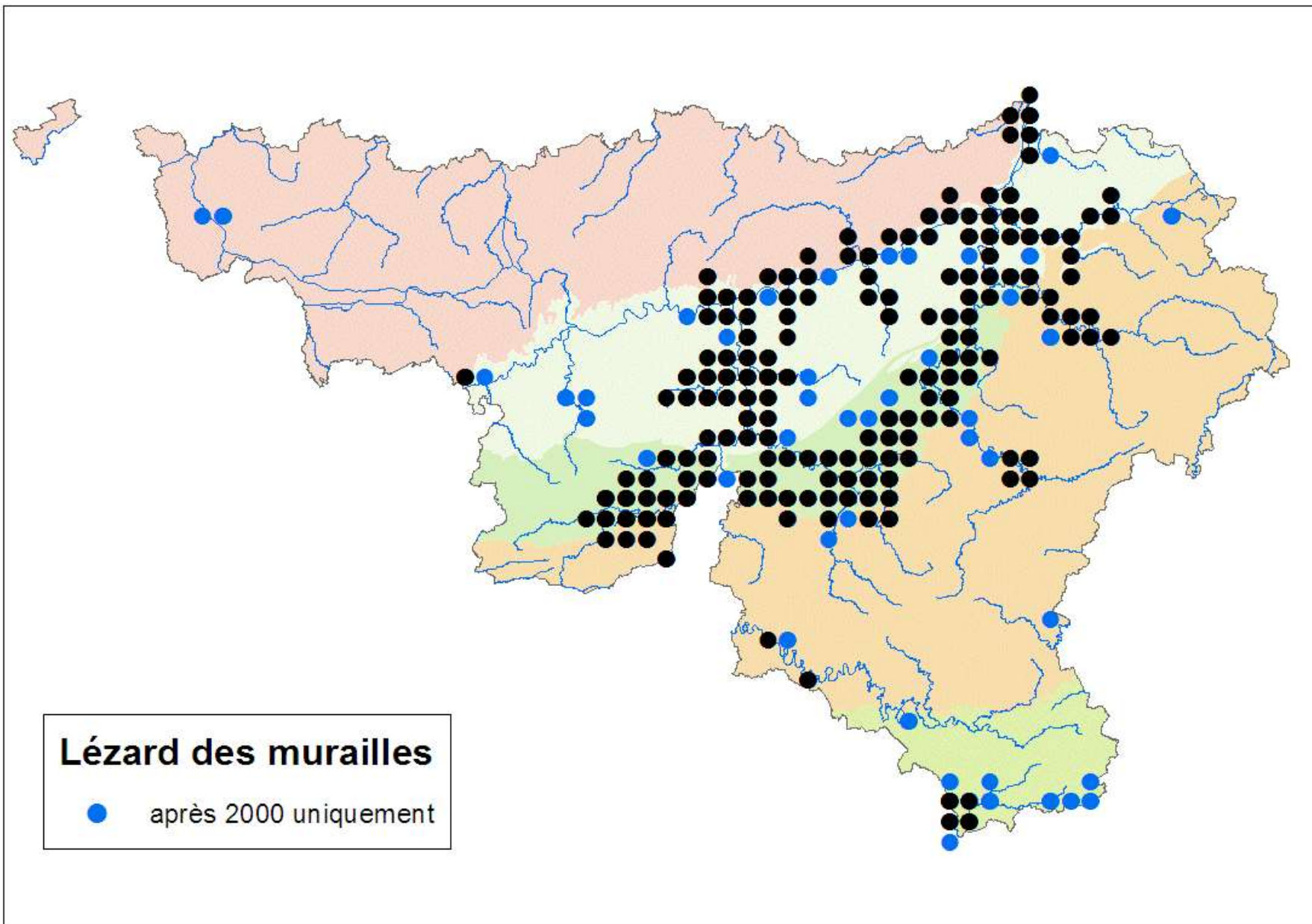
● après 2000 uniquement



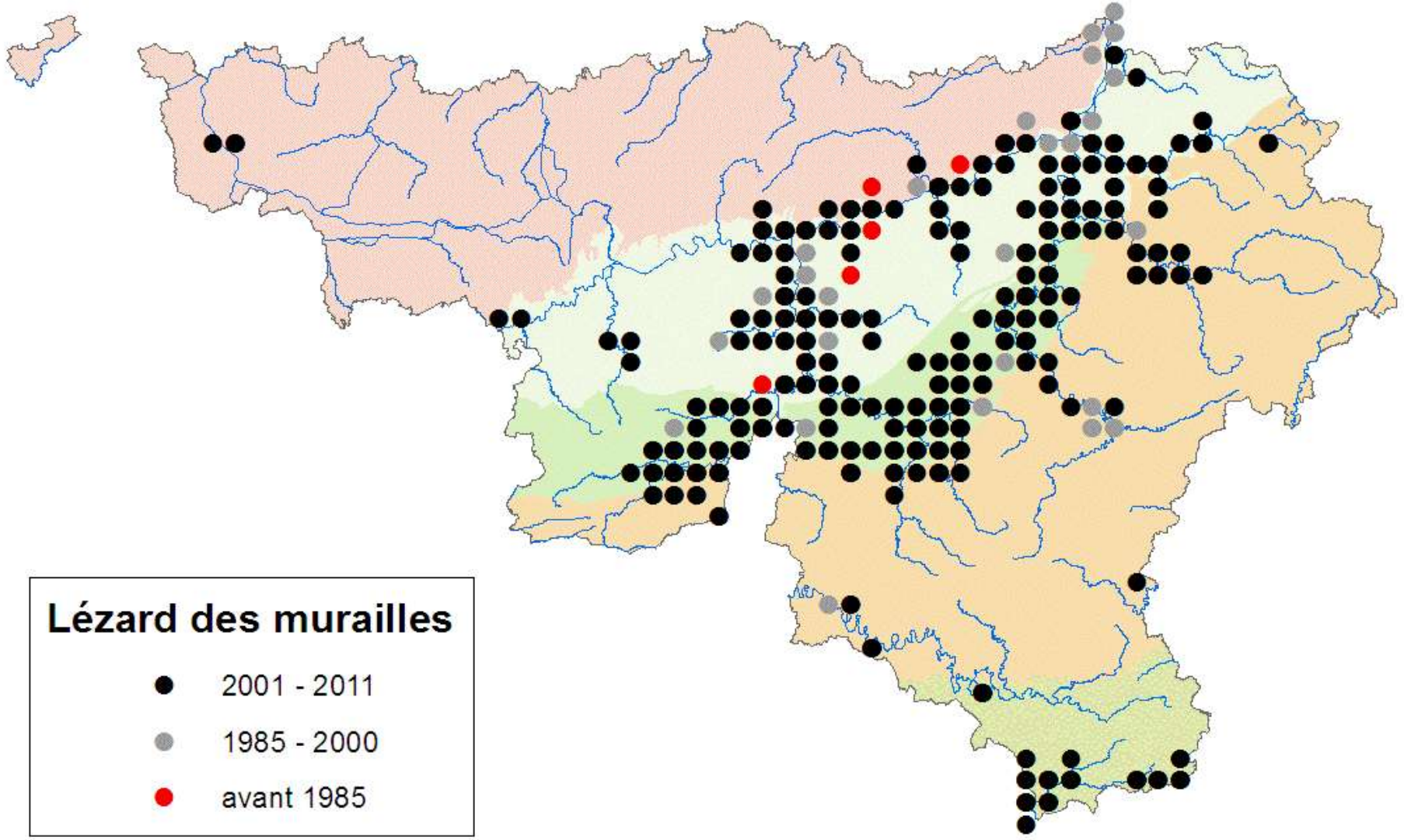
Lézard agile

- 2001 - 2011
- 1985 - 2000
- avant 1985





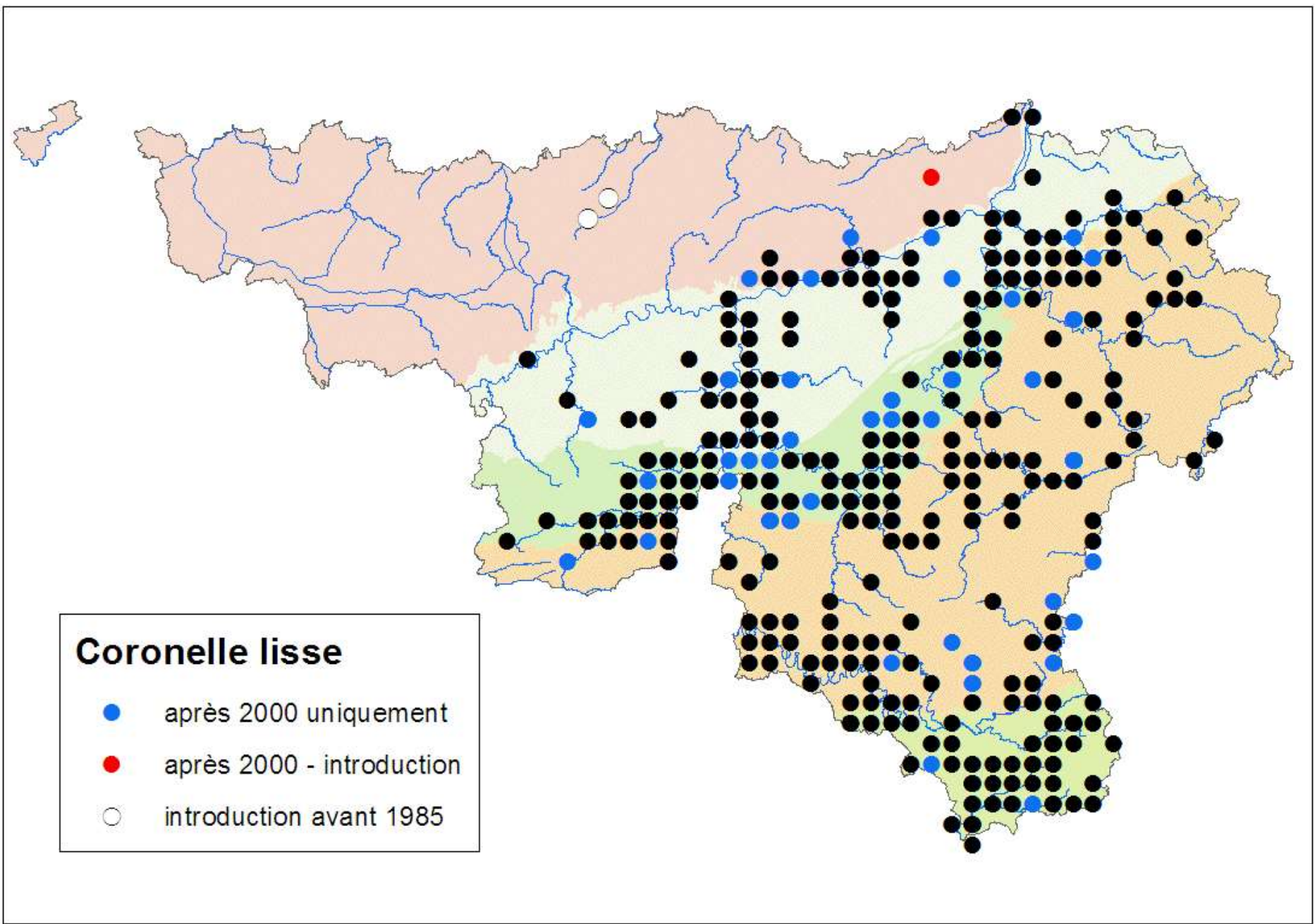


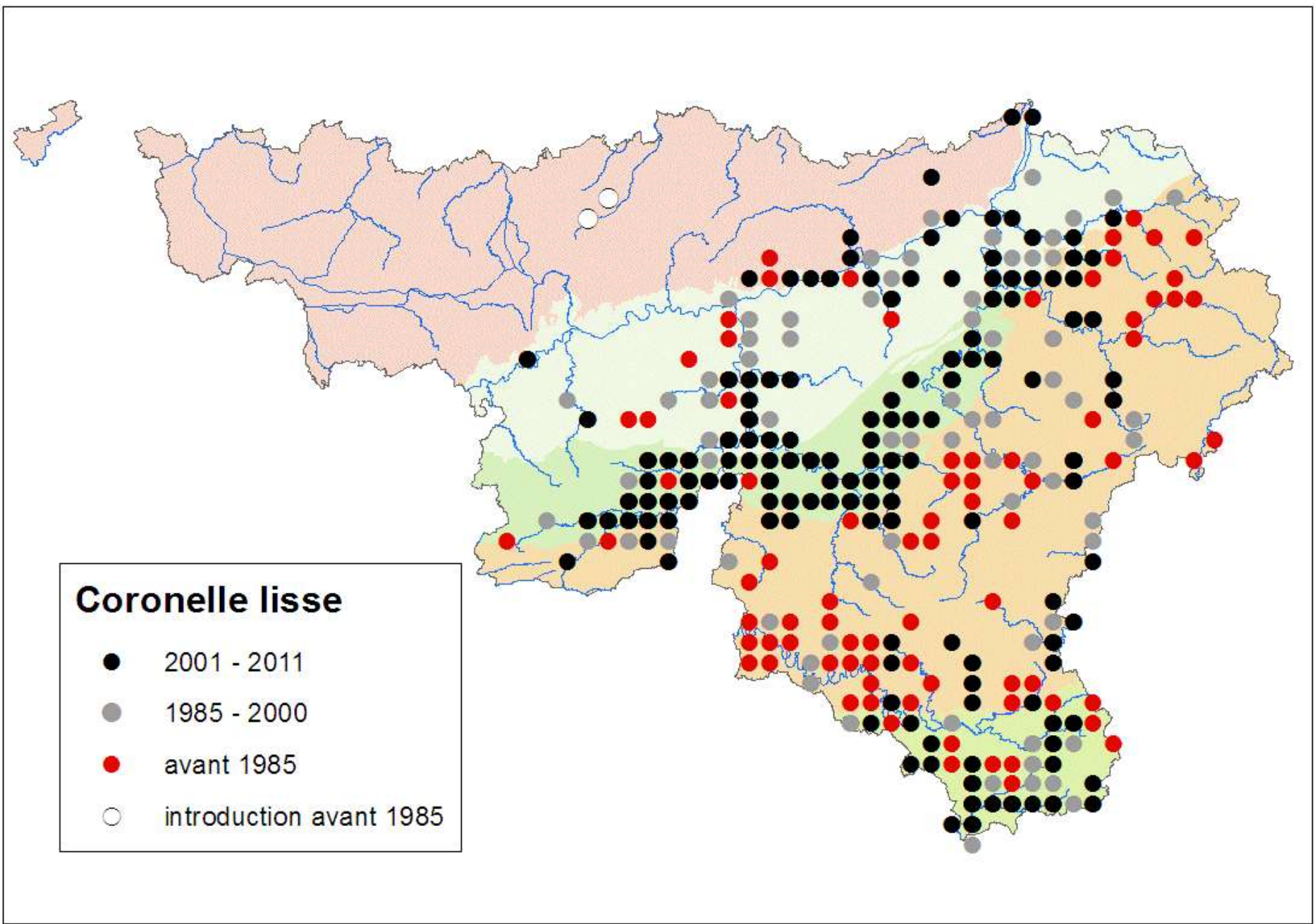


Lézard des murailles

- 2001 - 2011
- 1985 - 2000
- avant 1985



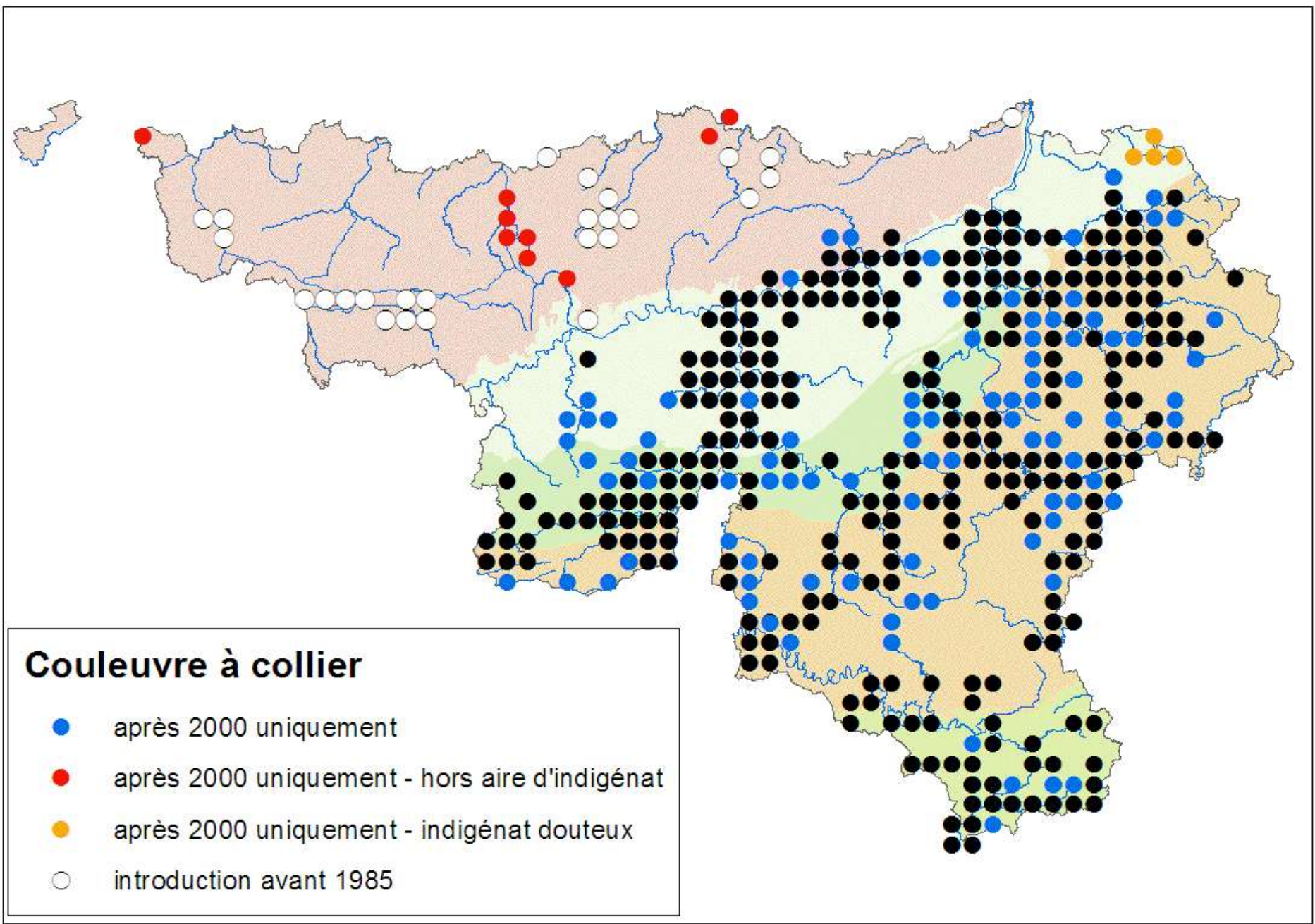




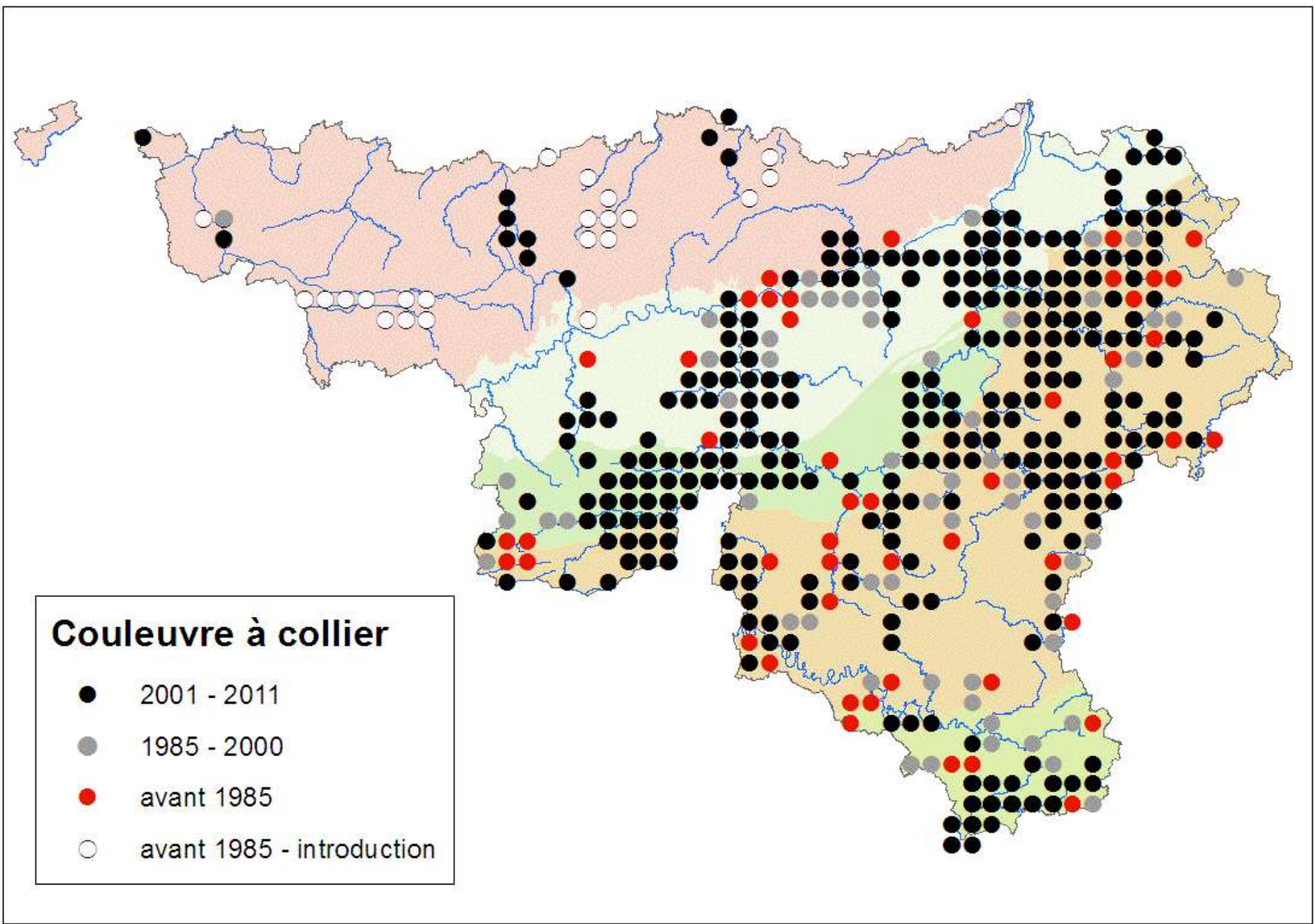
Coronelle lisse

- 2001 - 2011
- 1985 - 2000
- avant 1985
- introduction avant 1985

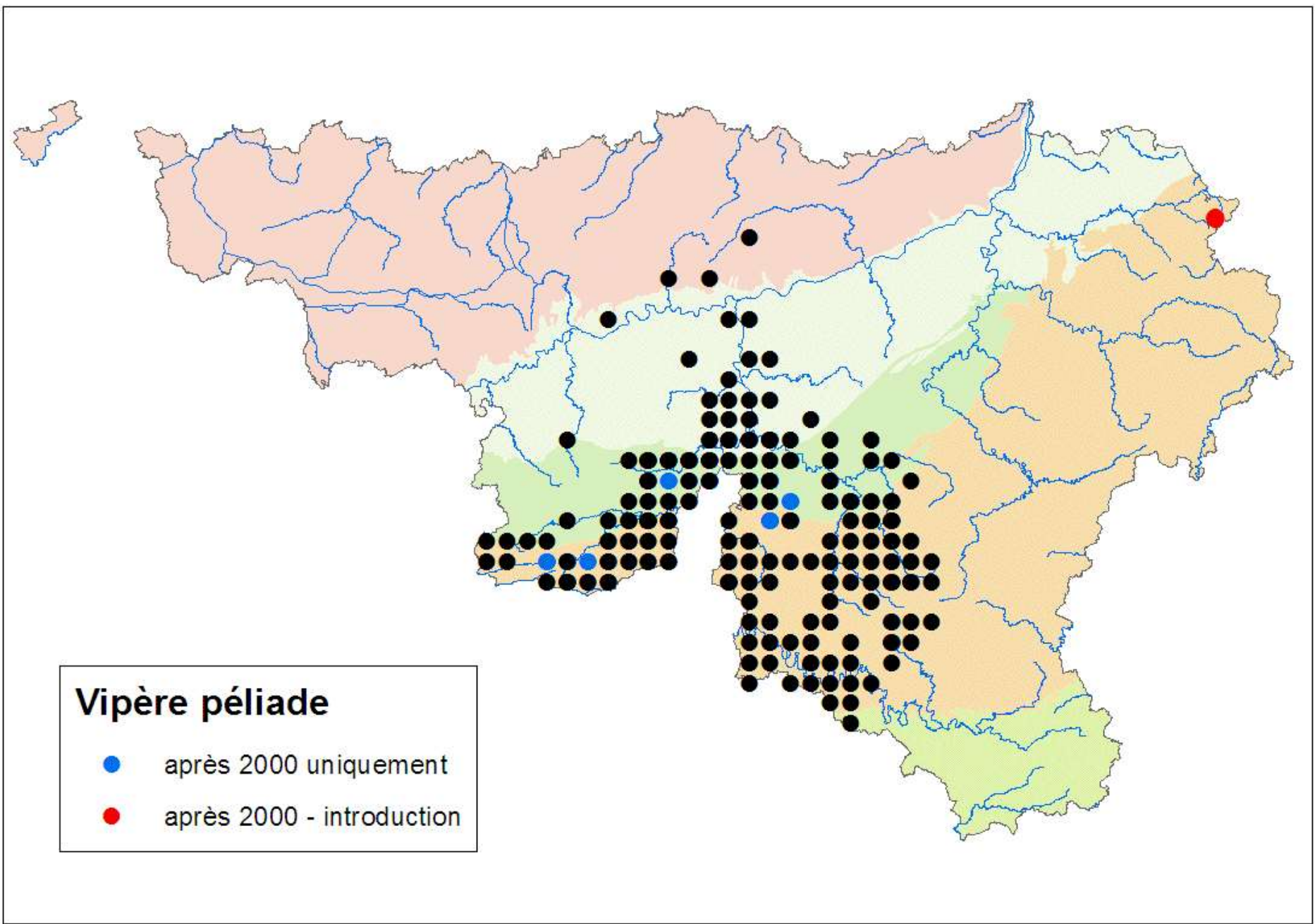




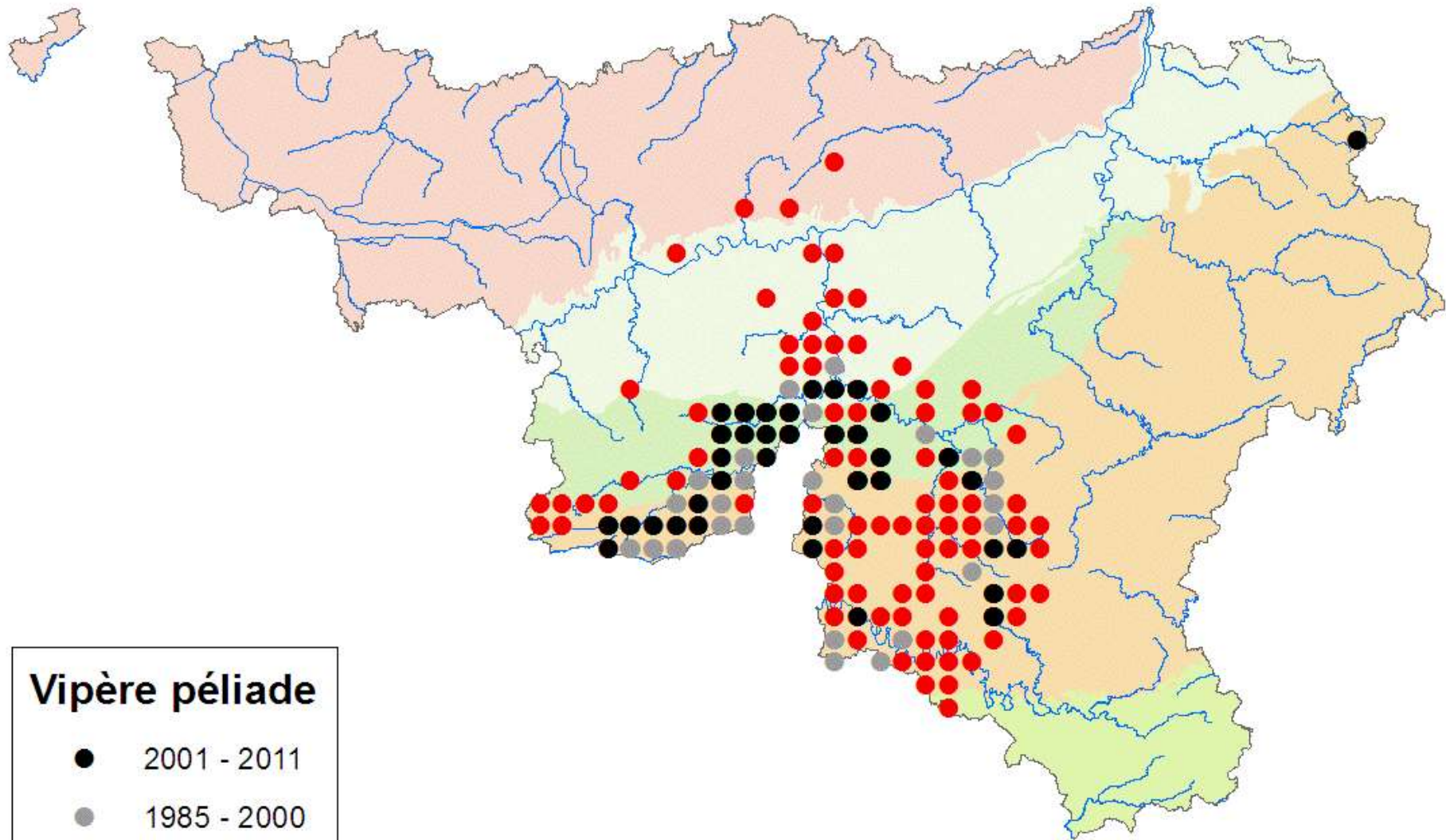








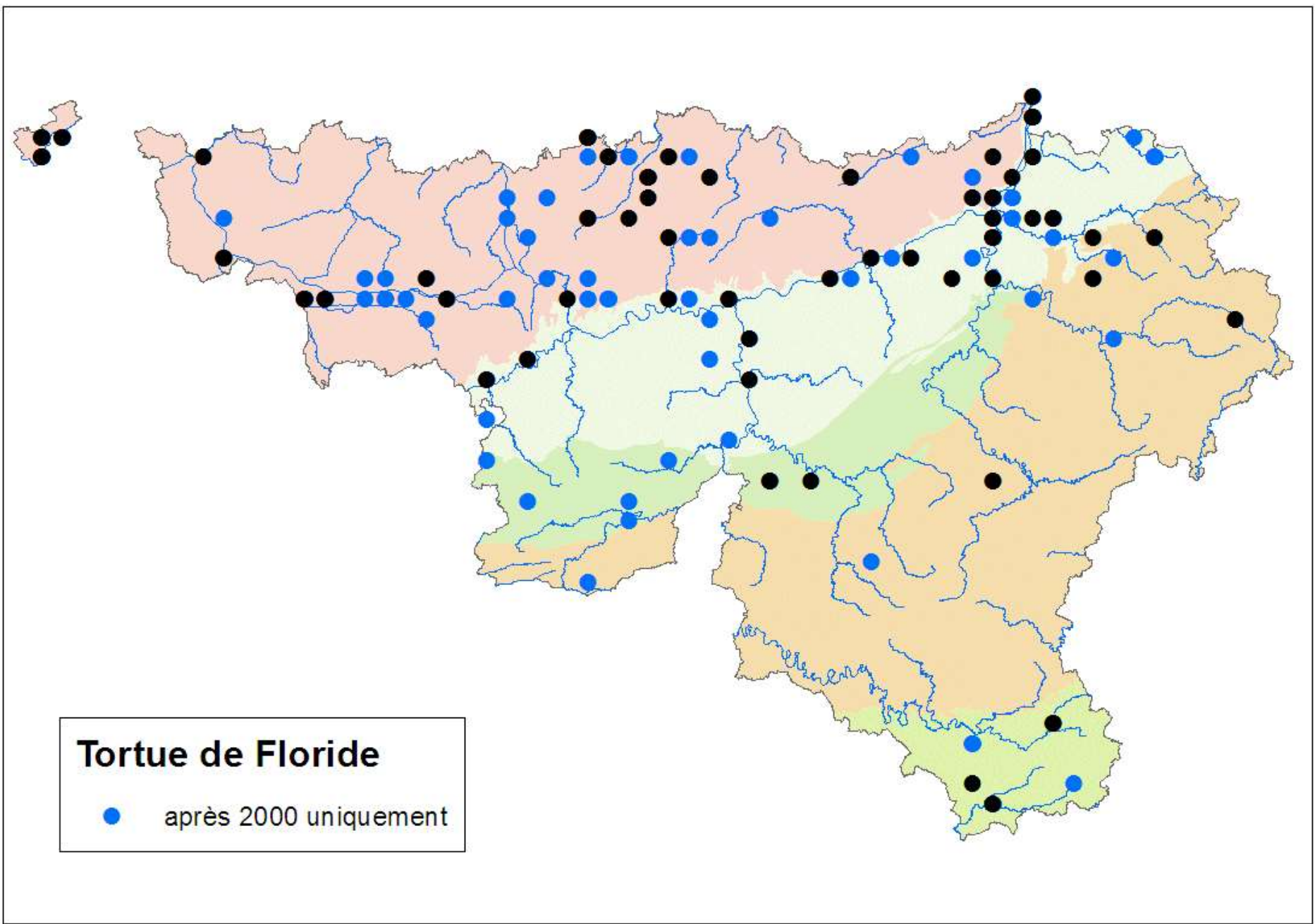




Vipère péliade

- 2001 - 2011
- 1985 - 2000
- avant 1985





Graptemys ouachitensis







24/05/2009

